

AW1697/Telescopic Columns

Technical Specification

AW1697

Model No.	Height in metres	Payload eqpt capacity	Max eqpt capacity	Post type	Post size A	Lower section B	Mid section B2	Upper section C	Ext. length D 1	Ext. length D 2	Base plate size H	Holding down bolt centres I	Holding down bolt size	Door height E	Door width F	Column rear clearance when tilting G	Weight Kgs
AW1697/4.5	4.5	75kgs	0.5m ²	BP	120x120	100x100	-	-	-	-	510 ²	450 ²	M20x300	600	350	1700	220
AW1697/6	6	50kgs	0.5m ²	BP	120x120	100x100	-	80x80	1500	-	510 ²	450 ²	M20x300	600	350	1700	233
AW1697/6HD	6	75kgs	0.75m ²	BP	120x120	120x120	-	90x90	1500	-	510 ²	450 ²	M20x300	600	350	1700	246
AW1697/7.5	7.5	40kgs	0.5m ²	BP	150x150	120x120	-	90x90	3000	-	630 ²	550 ²	M24x400	600	350	2000	310
AW1697/7.5HD	7.5	60kgs	0.75m ²	BP	150x150	150x150	-	120x120	3000	-	630 ²	550 ²	M24x400	600	350	2000	339
AW1697/9	9	30kgs	0.3m ²	BP	150x150	150x150	-	100x100	4500	-	630 ²	550 ²	M24x400	600	350	2000	393
AW1697/9HD	9	50kgs	0.5m ²	BP	200x200	200x200	-	120x120	4500	-	800 ²	700 ²	M27x600	600	350	2400	500
AW1697/12	12	30kgs	0.3m ²	BP	200x200	200x200	150x150	100x100	4400	3000	800 ²	700 ²	M27x600	600	350	2400	550
AW1697/15	15	15kgs	0.2m ²	BP	200x200	200x200	150x150	100x100	5000	5000	800 ²	700 ²	M27x600	600	350	2400	678

Telescopic Columns

ACC/TELE/4	4	50kgs	0.5m ²	FB	-	120x120	-	90x90	-	-	405 ²	350 ²	M16x200	280	110	-	124
ACC/TELE/6	6	50kgs	0.5m ²	FB	-	120x120	-	90x90	-	-	510 ²	450 ²	M20x300	280	110	-	149
ACC/TELE/8	8	50kgs	0.3m ²	FB	-	150x150	-	100x100	-	-	510 ²	450 ²	M20x300	280	140	-	222

Retracted Heights

2.7m (4m)

3.7m (6m)

5.7m (8m)

Options

PT No.

Double Door	/DD
Tamper Switch	/TS
Altron 4-point locking	/A4P
Padlock for internal locking of tilting sections	/APL
Winch Part No's	
Use With	Winch
AW1697/4.5-6HD	DW1000/97
AW1697/7.5HD	DW1500/97
AW1697/9-15m	DW2500/97

Example Part No.
AW1697/6/DD/APL

All camera mounting plates are DIA 127 with 8 No Ø 8.5 equi-spaced on 101.6 PCD.
Ø 40 thro' column spacer

For **accessories** refer to page 43

BASE SIZES ON PAGE 64

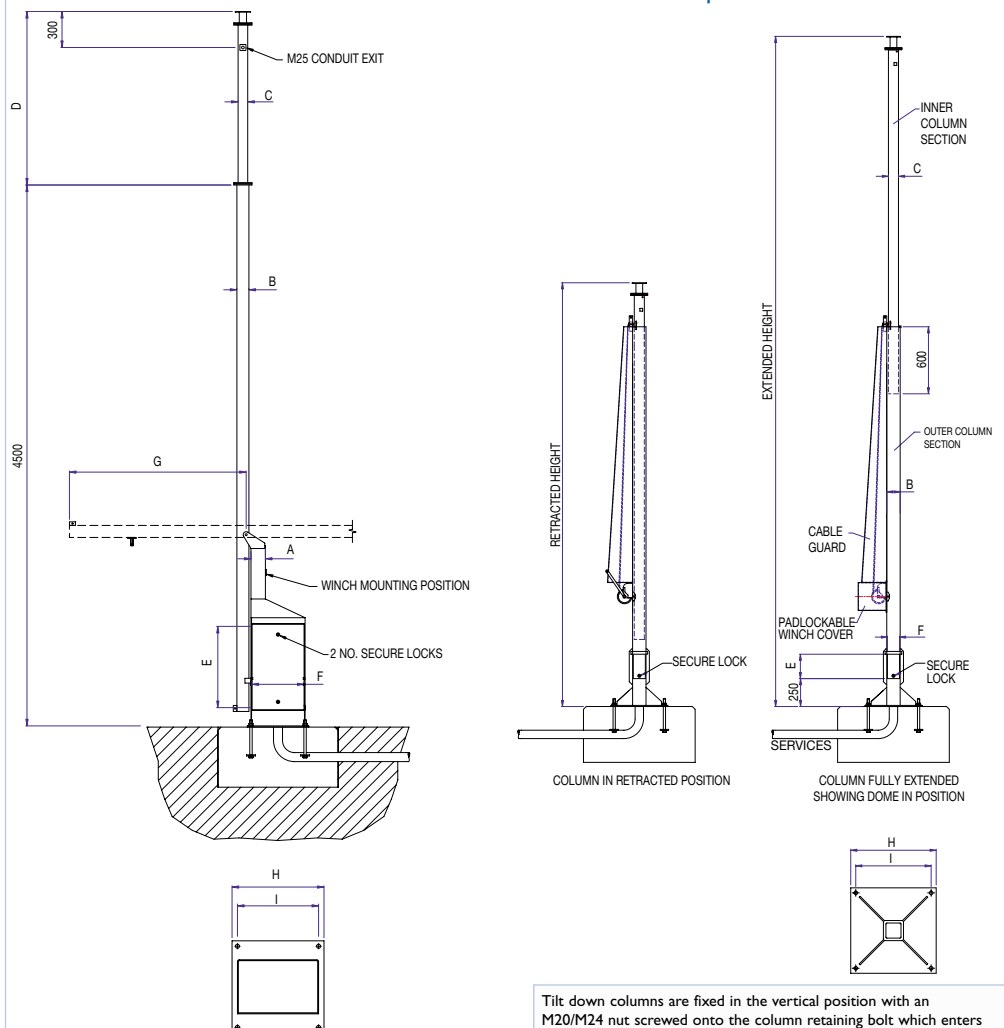
Generally we recommend the following:
Light Duty
Fixed camera/light to medium pan and tilt applications
Heavy Duty
Heavy duty fully functional PTZ application or where minimum movement is required

DATA SHEETS

For further details on AW1697 see data sheet:
1697/41/04
Telescopic Column
ACCTELE/41/04

AW1697 Cabinet Base Column

Telescopic Columns



Tilt down columns are fixed in the vertical position with an M20/M24 nut screwed onto the column retaining bolt which enters into the secure access hatch through the front of the post. This is then padlockable to stop unauthorised tilting.