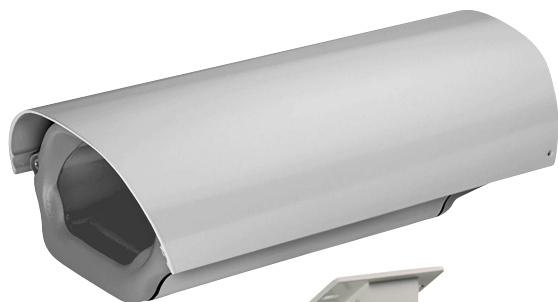




SUBMERGIBLE HOUSING INDOOR / OUTDOOR

Housing **AHEL 30 K1**



AVBPH 1K

AVBPH 1K

Bracket AWBJ



- Cast aluminium submersible housing for general uses.
- Modern design , adjustable with many cameras type 1/3" and 1/4".
- Opening system and original fixing
- Submersible Housing IP 66

- Option :
 - Wall brackets and ceil AWBJ
 - Sun shield ceiling
 - Power and cameras
 - Heater

AASSET SECURITY

153 rue Michel Carré - 95100 ARGENTEUIL

tél: (+33) 01 30 76 30 30 - fax: (+33) 01 30 76 25 74

infos@aasset-security.com

www.aasset-security.com





SUBMERSIBLE HOUSING INDOOR / OUTDOOR

HE L		DOCUMENTATION TECHNIQUE
AHEL 30 K1 Caisson anti-poussière	- usage intérieur	
Toit pare-soleil	- usage extérieur	
Ventilateur thermostaté	T.on $\geq 35^{\circ}\text{C} \pm 3^{\circ}$ T.off $\leq 20^{\circ}\text{C} \pm 3^{\circ}$	
Alimentation pour caméra	230 V~ entrée 230 V~ chauffage 24 V~, 400 mA sortie	

AASSET SECURITY

153 rue Michel Carré - 95100 ARGENTEUIL

tél: (+33) 01 30 76 30 30 - fax: (+33) 01 30 76 25 74

infos@aasset-security.com

www.aasset-security.com

