



## MER-28N080000A

Article number: 221261

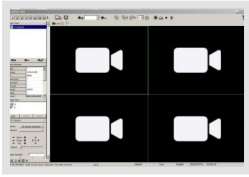
Multisignal HD Video Rekorder, 8-channel, up to 8MP, IP, HD-, EX-SDI, AHD, CVI, HD-TVI, 960H

8-Channel Multisignal Recorder	Programmable composite Spot Monitor output
Resolution cameras up to 8 megapixel	H.265/H.264 video compression standard
Automatic signal and resolution detection	Image data export via USB 2.0, POS interface
IP, HD-SDI, EX-SDI, HD-TVI, AHD, CVI, 960H, Composite	Intuitive GUI, DSGVO compliant features
HDMI and VGA video outputs (Main/Spot operation)	Access via mobile, browser and CMS
Resolution Main Video out UHD 3840x2160	eSATA connection, HDD Mirror function

## Specifications

<b>Video:</b> Signal format      Composite (FBAS), HD-TVI @ 8MP, AHD @ 8MP, CVI @ 8MP, EX-SDI @ 4MP, HD-SDI @ 4MP, IP @ 8MP Compression standard      H.264, H.265		<b>Network:</b> Data transfer incoming      200 Mbps Data transfer outgoing      200 Mbps Transmission rate (Network)      70 fps @ 1920 x 1080p	
<b>Display:</b> Playback      full screen, 4 channel split, 6 channel split, 8 channel split, 9 channel split Zoom function      in full screen mode (live and playback operation) Live Display      3840x2160, 1920x1080, 1280x1024, 1280x720, max. 200fps		<b>Interfaces / Inputs / Outputs:</b> IP channels      8 Channels total      8 Video inputs (amount)      8 Main video outputs      HDMI (4K), VGA Spot monitor      HDMI, VGA, composite (CVBS) Interfaces external storage      USB, eSATA, Internal: 2x HDD up to 20 TB max., eSATA upto 12 bays, No capacity limit ; 10TB or more Interfaces external storage      Internal: 2x HDD up to 20 TB max., eSATA upto 12 bays, No capacity limit ; 10TB or more Alarm inputs      8x TTL, programmable as NC/NO Alarm outputs      2x NO/NC contact, 2x TTL, open collector Audio inputs      RCA, 4 Audio output      RCA / HDMI Serial interfaces      RS-485 Serial interfaces protocols      Pelco D, Pelco P, Fastrax, UTC (HD signal format), UTC (SD signal format)	
<b>Recording:</b> Operation mode      Pentaplex Max. recording resolution      3840x2160 Recording speed      50fps@ 3840x2160, 100 fps @ 2560x1440, 200 fps @ 1920x1080, 200 fps @ 1280 x 720, 200 fps @ 960 x 540, 200 fps @ 704 x 576 Max. recording rate      200 fps, @1920x1080 Recording      permanent, timer, movement, contact, PoS-Text, panic, event Pre-alarm recording      up to 10sec.. Post-alarm recording      up to 60sec.. Export of images or clip      USB-port external HDD		<b>System requirements:</b> Operation system      Linux	
<b>Features:</b> Motion detector      Free selectable areas Alarm notification      e-mail notification, alarm output, remote software, Live Popup, Spot Popup, Buzzer, PTZ Preset Alarm triggers      contact, motion detection, video loss, disk error, PoS-Text Password protection      administrator & users Digital signature      watermark Menu languages      English, German, French, Spanish, Italian, Russian, Portugese, Polish, Turkish, Hungarian, norwegisch, Swedish, Finnish, Persian, Japanese, Korean, Chinese, Taiwanese, Thai, Slovenian Mobile access      iPhone, Android OS Remote access      Microsoft Internet Explorer, Mozilla Firefox (live image only), Safari (live image only), remote software Search function      date/time, event, calendar, text, Thumbnail, Panorama, Instant Playback, bookmark Event logs      yes Time synchronization      NTP Covert camera mode      yes Patrol mode      yes		<b>General:</b> Series      eneo MER-Series Dimensions (HxWxD)      50x380x340mm 19" Rack mountable      yes Number of HDD (internal)      max. 2 x SATA Control units (external)      mouse, remote control Colour      anthracite / black Harddisk capacity (internal)      0 TB Max. harddisk capacity (internal)      20 TB Housing      Metal/Plastic Weight      2.0kg Power consumption      60W RAID      RAID 1 Supply voltage      12VDC (PSU 100-240VAC, 50/60Hz included) Temperature range (operation)      0°C ~ +40°C Text insertion interface      ATM/POS, 4 chann. max.	
<b>Network:</b> Network      10/100/1000 Base-Tx, RJ45 Network protocols      TCP/IP, HTTP, DHCP, NTP, UPnP Data transfer rate      400 Mbps		<b>Scope of delivery:</b> Parts supplied      manual, IR remote controller, PSU, power cord, HDD assembly-kit, remote viewer software, mouse, 19" rack mount angle optional	

## Related Products



MER\_HDR\_CMS|SKU: 207186



HDD-3000SATA Purple|SKU: 217657



HDD-4000SATA Purple|SKU: 217659



HDD-6000SATA Purple|SKU: 217660



HDD-8000SATA Purple|SKU: 218583

## More product information

Intelligent control of the recording rate based on incoming camera resolution  
Channels can be assigned with IP or different HD / SD signal formats (mixed operation possible)

## Product recommendations



CON-HDD eneo|SKU: 216959



HDD-2000SATA Purple|SKU: 217658



KBD-2USB|SKU: 217652

