

FOR A GOOD **REASON**
GRUNDIG

Owner's Manual



IP Cameras & Domes

GBR-CM02 Corner Mount Adapter

GBR-CM02.20.1.02.08.2011

© ASP AG



Content:

1. Introduction	1
2. Package Contents & Needed Items	1
3. Installation	2

1. Introduction

The Dome Cameras GCI-H0522V and GCI-K0322V can be mounted in an upper corner with this Corner Mount Adapter.

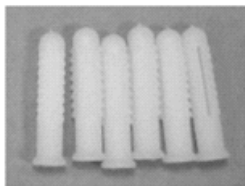
The items and tools needed for installation are listed below.

2. Package Contents & Needed Items

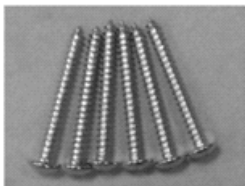
These parts are included:



Corner Mount



**M4 Plastic
Anchors (x6)**



**M4 Self-tapping
Screws (x6)**

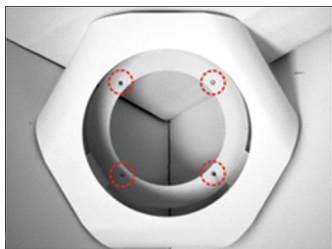


**M4 Mechanical
Screws (x4)**

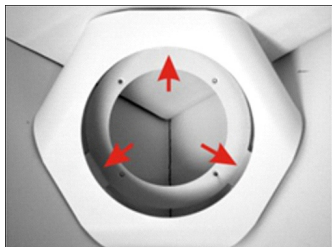
Tools Needed:

- Tool for drilling
- Phillips Screw Driver
- Security Torx (included in the package of the camera)

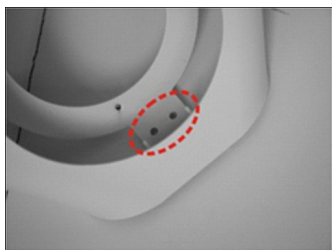
3. Installation



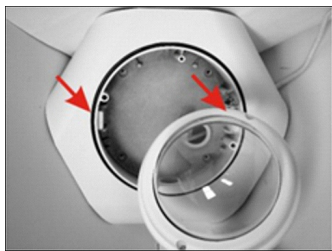
Step 1:
Match the Corner Mount Adapter to the ceiling corner. Please note that the Dome Camera's Housing installing holes are in position as shown in the figure on the left.



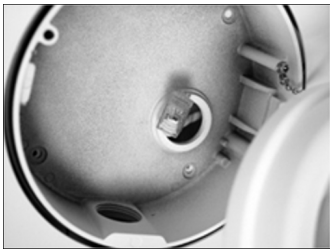
Step 2:
Drill six holes on the walls and the ceiling to install six M4 plastic anchors.



Step 3:
Fix the Corner Mount on the Ceiling by fastening the six M4 Screws in the Plastic Anchors.



Step 4:
Place the Dome Camera's Housing in the Corner Mount Adapter. Please note that the Dome Camera's Housing needs to be in the same position as in the figure.



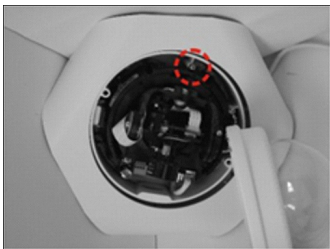
Step 5:
Thread the RJ-45 cable (and a power cable if needed) through the Dome Camera's Housing.



Step 6:
Tighten the four M4 Screws to install the Dome Camera's Housing in the Corner Mount.



Step 7:
Place the Camera Module into the Dome Camera's Housing until there is a "click" sound.



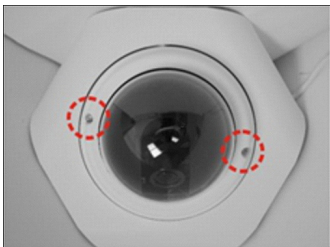
Step 8:
Tighten the screw on the Camera Module to fix the Camera Module on the Dome Camera's Housing.



Step 9:
Connect the RJ-45 cable (and the power cable if applicable) to the Camera Module, and then adjust the Dome Camera lens to a desired angle. Please note that the zoom level and focal length might be different with the Dome Cover on, in this case, adjusting zoom level and focal length through the Dome Cover is recommended. To do this, please position the optical cover (cupola) of the Dome Cover in front of the lens.



Step 10:
Put the Plastic Inner Cover back on the Camera Module.



Step 11:
Screw on the two Torx screws on the side of the Dome Cover tightly to fasten the Dome Cover. The camera installation is now complete.

Specifications GBR-CM02

Suitable for GCI-H0522V; GCI-K0322V

Body material Steel

Colour White

Weight 0.5 kg

Dimensions (wxhxd) 222 × 204 × 117 mm
