

Product Overzicht 2024

Video Security

SMART serie

GRUNDIG



What can you expect from the new SMART product line from GRUNDIG Security?

Leaving our tried and tested reliability aside, you will also find a whole lot of image analysis functions, supported by artificial intelligence (AI). And there's a lot of functionality available. You can use facial recognition, for instance, to recognise people, or the LPR function to identify vehicle licence plates. Or you can quite simply reduce the frequency of false alarms signalling a spurious break-in or perimeter breach, by classifying objects as 'vehicle', 'person' or 'other'.

The SMART cameras from GRUNDIG Security can recognise faces in crowds of people, count heads and determine the length of queues at your supermarket till, therefore helping you to make the best possible use of your resources. They'll let you know when unauthorised people cross pre-defined lines or enter certain areas, and they'll trigger an alarm when objects are left at your doorstep.

These are just a few examples out of a plethora of possibilities which the exceptionally flexible SMART line products from GRUNDIG Security are able to offer.

So, if you want more than just pretty pictures and long recording times, please get in touch.

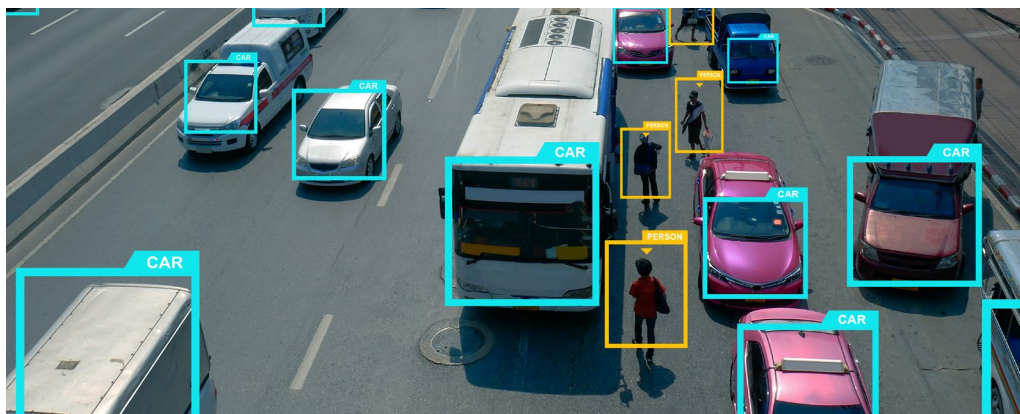
We look forward to hearing from you!



Content

Image analysis function	3
IP Cameras	
Eyeball Fix Dome	6
Bullet	7
Fisheye Speed Dome	8
Mobile App	9
Recorders	10
Monitors	12
Accessories	13
Article numbers, structure and composition, guarantee, sustainability	14
YouTube links	15

Classify persons & vehicles



The GRUNDIG Security Smart Line cameras allow for clear classification of people and vehicles. This enables users, e.g. control centre operators, to define alarm events and responses even more precisely. The bidirectional audio function also allows direct communication with people on site.

Identify licence plates



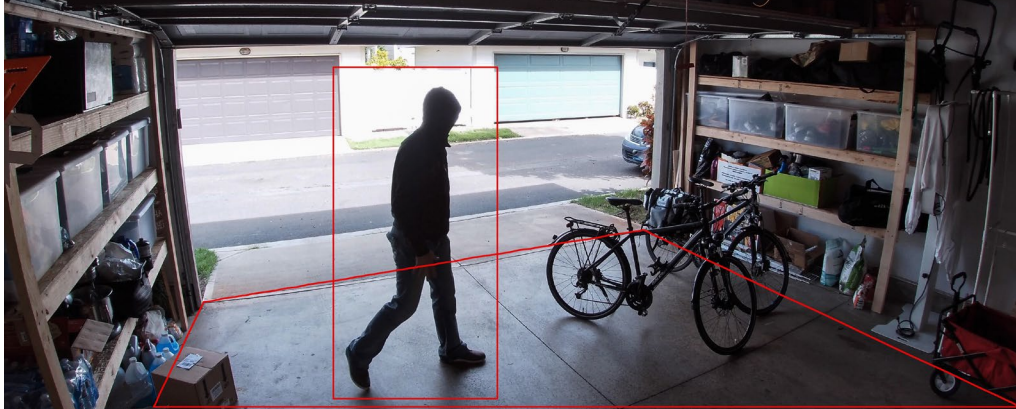
The licence plate recognition function enables reliable and automated access control, for example on a company's premises. The legitimisation of the respective vehicle is regulated via black and white lists.

Identify faces



As soon as a face is recognised, alarm information, including attributes such as gender and age, is reported. The data is compared with the database: If the face is not stored in the database, it is recognised as "unknown". Wearing a face mask can also be defined as a recognition attribute.

Enter area



The "enter area" detection function allows the precise definition of areas. As soon as someone enters the defined area, an alarm message is triggered. The moving object is classified as a person, motorised or non-motorised vehicle. Four different customisable rules are available for the alarm response.

Detect left/removed objects



The "left/removed objects" detection function offers two usage options: objects located in a predefined area can be quickly identified. The function can also be used to detect the removal of any objects in this area.

Manage queues



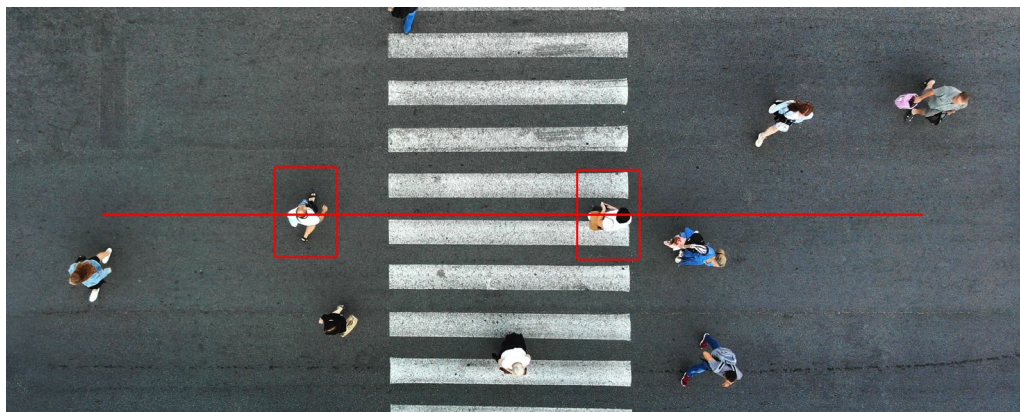
An alarm will be triggered as soon as a queue reaches a certain length. Alternatively, this function can be used to trigger an event by exceeding a certain dwell time.

Use Heat Map



The heat map function facilitates the identification of areas where people prefer to stay or which are less frequented.

Cross lines



If "Line crossing" is activated, crossing a previously defined line triggers an alarm message. The corresponding object is classified as a person, motorised or non-motorised vehicle. Four different customisable rules are available for the alarm response.

Analyse crowds



An alarm is triggered as soon as the set number of people in a predefined area is exceeded. An acoustic message can also be emitted.

Count people/objects



The "people/object counting" analysis function reliably counts people, moving objects as well as motorised or non-motorised vehicles, also in two different directions. By means of powerful reports, the collected data can be evaluated for further use.

Detect unusual noises



This audio analysis function detects unusual noises such as barking dogs, baby crying and gunshots, thereby triggering an alarm. The sensitivity of this function can be adjusted infinitely.



GU-CI-AC5617E

GU-CI-AC5637E

GU-CI-AC8616E

GU-CI-AC5617V

GU-CI-AC5637V

GU-CI-AC8616V

	Smart	Smart	Smart	Smart	Smart	Smart
Video Resolution	2880 x 1620	2880 x 1620	3840 x 2160	2880 x 1620	2880 x 1620	3840 x 2160
Sensitivity Colour	0.004 Lux @ F1.6 (AGC ON)	0.004 Lux @ F1.6 (AGC ON)	0.009 Lux @ F1.6 (AGC ON)	0.004 Lux @ F1.6 (AGC ON)	0.004 Lux @ F1.6 (AGC ON)	0.009 Lux @ F1.6 (AGC ON)
Lens Focal Length	2.8 mm	2.8 ~ 12 mm motorized, autofocus	2.8 mm	2.8 mm	2.8 ~ 12 mm motorized, autofocus	2.8 mm
Col/B&W	Auto, IR-cut filter removable (ICR)					
Wide Dynamic Range	120 dB		72 db (Digital Wide Dynamic Range)	120 dB		72 db (Digital Wide Dynamic Range)
Image Enhancement	BLC, 3D DNR, HLC					
Max. IR Distance	Up to 30 m	Up to 45 m	Up to 30 m	Up to 20 m	Up to 30 m	Up to 20 m
Video Compression	H.264, H.264+, H.265, H.265+, MJPEG	H.264, H.264+, H.265, H.265+, MJPEG	H.264, H.264+, H.265, H.265+, MJPEG	H.264, H.264+, H.265, H.265+, MJPEG	H.264, H.264+, H.265, H.265+, MJPEG	H.264, H.264+, H.265, H.265+, MJPEG
SD Memory	Built-in Micro SD, SDHC, SDXC slot from 32 up to 256 GB					
Audio Input/Output	Built-in microphone	1-ch input and 1-ch output	Built-in microphone	Built-in microphone	1-ch input and 1-ch output	Built-in microphone
Audio Detection	Detects unusual noises: dogs barking, babies crying, gunshots, sudden sound increase and decrease					
License plate Recognition	If SD-card is applied or Smart recorder is connected					
Intelligent Analytics Functions	Detection of Motion, People & Vehicle, Intrusion, Line Crossing, Object Removal, Object Counting, Faces, Queue Length and/or Crowd Density Detection as well as Heat Map					
Operating Temperature	-35 °C ~ 60 °C (-31 °F ~ 140 °F)					
Supply Voltage	12 VDC, PoE (802.3af)					
Power Consumption	Max. 5.5 W	Max. 9.5 W	Max. 5.5 W		Max. 7 W	Max. 5.5 W





GU-CI-AC5617T



GU-CI-AC5637T



GU-CI-AC8616T



GU-CI-AP4634T



GU-CI-AP5634T

	Smart	Smart	Smart	Smart	Smart
Video Resolution	2880 x 1620	2880 x 1620	3840 x 2160	2560 x 1440	2880 x 1620
Sensitivity Colour	0.004 Lux @ F1.6 (AGC ON)	0.004 Lux @ F1.6 (AGC ON)	0.009 Lux @ F1.6 (AGC ON)	0.0005 Lux	0.004 Lux @ F1.6 (AGC ON)
Lens Focal Length	3.6 mm	2.8 ~ 12 mm motorized, autofocus	3.6 mm	2.8 ~ 12 mm motorized, autofocus	5 ~ 50 mm motorized varifocal lens
Col/B&W	Auto, IR-cut filter removable (ICR)				
Wide Dynamic Range	120 dB	120 dB	72 db (Digital Wide Dynamic Range)	120 dB	120 dB
Image Enhancement	BLC, 3D DNR, HLC				
Max. IR Distance	Up to 30 m	Up to 45 m	Up to 30 m	Up to 50 m	Up to 80 m
Video Compression	H.264, H.264+, H.265, H.265+ , MJPEG				
SD Memory	Built-in Micro SD, SDHC, SDXC slot from 32 up to 256 GB				
Audio Input/Output	Built-in microphone	1-ch input and 1-ch output	Built-in microphone	1-ch input and 1-ch output	
Audio Detection	Detects unusual noises: dogs barking, babies crying, gunshots, sudden sound increase and decrease				
License plate Recognition	If SD-card is applied or Smart recorder is connected				
Intelligent Analytics Functions	Detection of Motion, People & Vehicle, Intrusion, Line Crossing, Object Removal, Object Counting, Faces, Queue Length and/or Crowd Density Detection as well as Heat Map				
Operating Temperature	-35 °C ~ 60 °C (-31 °F ~ 140 °F)				
Supply Voltage	12 VDC, PoE (802.3af)				
Power Consumption	Max. 5.5 W	Max. 9.5 W	Max. 5.5 W	Max. 9.5 W	





GU-CI-AP12616F



GU-CI-AP5647P

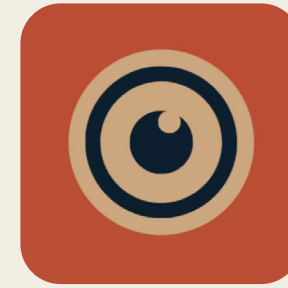
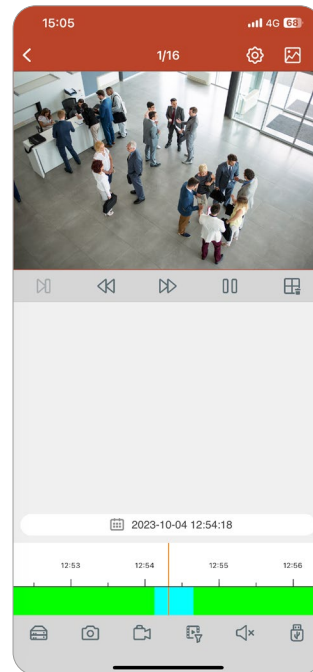
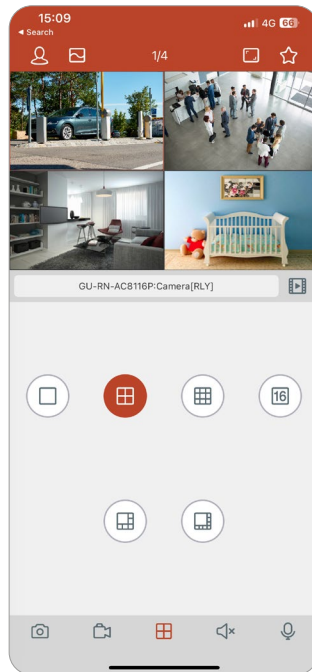
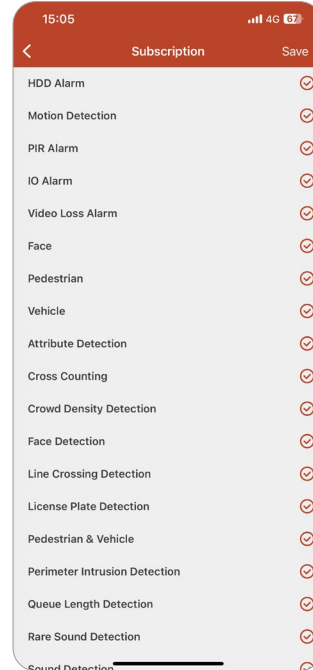
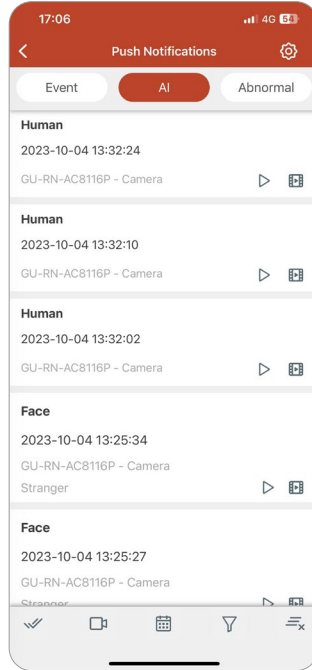
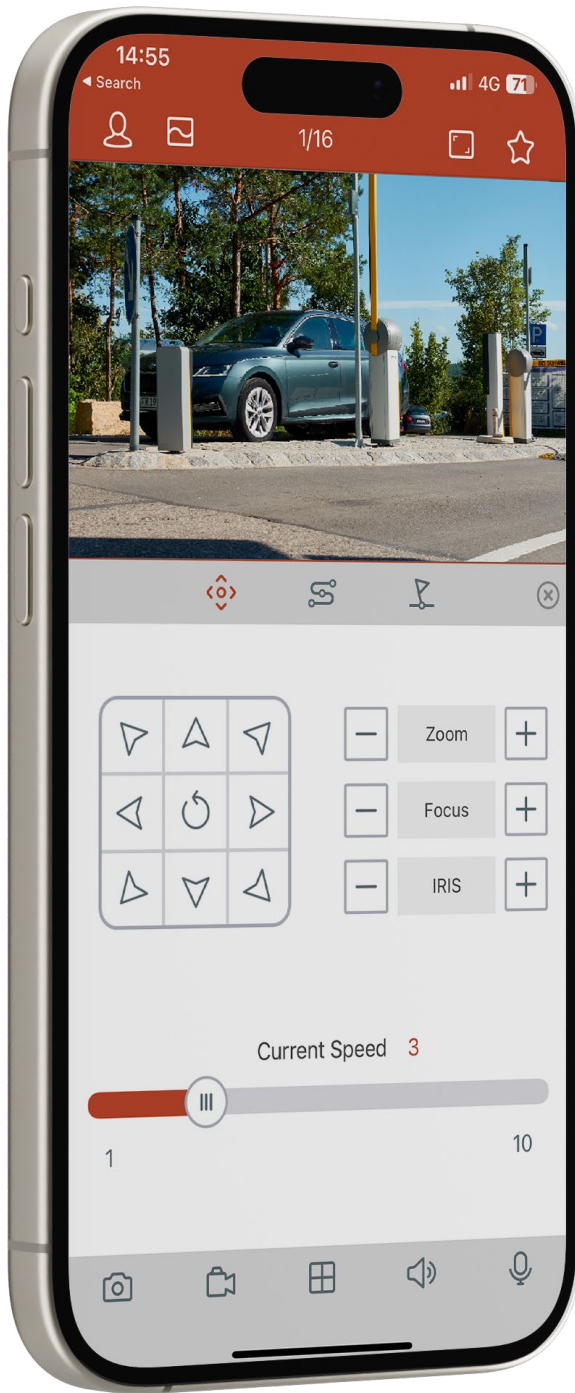
	Smart	Smart
Video Resolution	4000 x 3000	2592 x 1944
Sensitivity Colour	0.01 Lux	0.003 Lux @ F1.6 (AGC ON)
Lens Focal Length	1.6 mm	4.3 ~ 142 mm motorized, autofocus
Col/B&W	Auto, Color, Removable IR-Cut Filter (ICR)	
Wide Dynamic Range	Digital WDR	120 dB
Image Enhancement	BLC, 3D DNR, HLC	
Max. IR Distance	Up to 10 m	Up to 150 m
Video Compression	H.264, H.264+, H.265, H.265+, MJPEG	
SD Memory	Built-in Micro SD, SDHC, SDXC slot from 32 up to 256 GB	
Audio Input/Output	Built-in microphone & built-in speaker	1-ch input and 1-ch output
Audio Detection	Sudden sound increase and decrease	Detects unusual noises: dogs barking, babies crying, gunshots, sudden sound increase and decrease
License plate Recognition	If SD-card is applied or Smart recorder is connected	
Intelligent Analytics Functions	Motion detection	Detection of Motion, People & Vehicle, Intrusion, Line Crossing, Object Removal, Object Counting, Faces, Queue Length and/or Crowd Density Detection as well as Heat Map
Operating Temperature	-35 °C ~ 60 °C (-31 °F ~ 140 °F)	
Supply Voltage	12 VDC, PoE (IEEE 802.3af)	12 VDC, PoE (IEEE 802.3at)
Power Consumption	Max. 9.5 W	Max. 25 W



THE SMART LINE FROM GRUNDIG SECURITY: NDAA COMPLIANT

NDAA is the abbreviation for the National Defense Authorization Act. The John S. McCain National Defense Authorization Act (NDAA) for Fiscal Year 2019 was signed into law on August 13, 2018 and effective from August 2020. The law, specifically Section 889, prohibits federal agencies, their contractors and grant or loan recipients from procuring or using “telecommunications and video surveillance equipment or services” from specific Chinese companies as a “substantial or essential component of any system, or as critical technology as part of any system.” The SMART product line from GRUNDIG Security complies with the requirements of this law.





THE GSVM APP BY GRUNDIG SECURITY: INSTALLED AND CONFIGURED IN NO TIME

The GSVM app is a surveillance application for mobile phones and tablets.

The Mobile Software App has been designed to help small businesses effectively operate and manage security devices from anywhere and at anytime.

The power to view live images, play back footage, and receive notifications remotely keeps owners and operators in touch with their business, even when away.

- Real-time video preview of up to 16 channels
- Live control of PTZ Cameras
- Remote configuration of connected devices
- Display the cause of alarm triggering
- Push alarm notification
- Snapshot function
- Integration of devices via P2P cloud and IP-address



GU-RN-AC8104P

GU-RN-AC8108P

GU-RN-AC8116P

GU-RN-AP8216N

	Smart	Smart	Smart	Smart
IP Inputs	4 channels	8 channels	16 channels	16 channels
Recording Bandwidth	max. 50 Mbps	128 Mbps	112 Mbps	256Mbps
Outgoing Bandwidth	max. 64 Mbps	128 Mbps	96 Mbps	128 Mbps
Recording Resolution	8 MP, 5 MP, 3 MP, 1080p, 960p, 720p			
Video Compression	H.264, H.264+, H.265, H.265+ , MJPEG			
Recording Mode	Continuous, Event Alarm, Motion, Schedule			
Search Mode	Date, Time, Event Alarm, Motion, Search Backup			
Smart Search Function	Search for people, motorized vehicles, non-motorized vehicles, intrusion and line crossing, thumbnails, tags, faces and characteristics, attendance, visit frequency and license plates			
External Backup	USB HDD, USB Memory, Network			USB HDD, USB Memory, DVD-R, Network
HDMI Output	4K (3840 × 2160), 2K (2560 × 1440), 1920 × 1080, 1600 × 1200, 1900 × 1200, 1440 × 900, 1280 × 1024, 1280 × 720, 1024 × 768			HDMI1: 3840 x 2160 (EDID/4K), 2560 x 1440, 1920 × 1080, 1440 x 900, 1280 x 1024, 1280 x 720, 1024 x 768 HDMI2: 1920 × 1080, 1440 x 900, 1280 × 1024, 1280 × 720, 1024 × 768
Harddisk bay	1 x SATA III, 1 x eSATA		2 x SATA III, 1 x eSATA	
Max. Storage Capacity	Up to 10TB capacity for each HDD			
Audioeingang/-ausgang	1-ch input and 1-ch output			
Alarmeingang/-ausgang	4/1	8/1	8/1	16/1
Power over Ethernet	4 independent 10, 100 Mbps PoE Ethernet interfaces	8 independent 10, 100 Mbps PoE Ethernet interfaces	16 independent 10, 100 Mbps PoE Ethernet interfaces	—
Supply Voltage	48 VDC, Power Adapter 100 ~ 240 VAC 50, 60Hz included			12 VDC ±10%
Power Consumption	≤ 5 W without harddisk	≤ 6 W without harddisk	≤ 8 W without harddisk	≤ 18 W without harddisk



GU-RN-AP8232N

GU-RN-AP8864N

GU-RN-AT816256N

	Smart	Smart	Smart
IP Inputs	32 channels	64 channels	256 channels
Recording Bandwidth	256 Mbps	640 Mbit/s	1024 Mbps
Outgoing Bandwidth	128 Mbps	640 Mbit/s	800 Mbps
Recording Resolution	8 MP, 5 MP, 3 MP, 1080p, 960p, 720p		
Video Compression	H.264, H.264+, H.265, H.265+ , MJPEG		
Recording Mode	Continuous, Event Alarm, Motion, Video Loss, Schedule		
Search Mode	Date, Time, Event Alarm, Motion, Search Backup		
Smart Search Function	Search for people, motorized vehicles, non-motorized vehicles, intrusion and line crossing, thumbnails, tags, faces and characteristics, attendance, visit frequency and license plates		
External Backup	USB HDD, USB Memory, Network		
HDMI Output	HDMI1: 3840 x 2160 (EDID/4K), 2560 x 1440, 1920 x 1080, 1440 x 900, 1280 x 1024, 1280 x 720, 1024 x 768 HDMI2: 1920 x 1080, 1440 x 900, 1280 x 1024, 1280 x 720, 1024 x 768	HDMI1, 2 & 3: 3840 x 2160 (EDID/4K), 2560 x 1440, 1920 x 1080, 1440 x 900, 1280 x 1024, 1280 x 720, 1024 x 768 HDMI4: 1920 x 1080, 1440 x 900, 1280 x 1024, 1280 x 720, 1024 x 768	
Harddisk bay	4 x SATA III, 1 x eSATA	8 x SATA III, 1 x eSATA	16 x SATA III, 1 x e-SATA
Max. Storage Capacity	Up to 10TB capacity for each HDD	Up to 12 TB capacity for each HDD	Up to 16 TB capacity for each HDD, hot swappable
Audioeingang/-ausgang	1-ch input and 1-ch output		
Alarめingang/-ausgang	16/1	16/4	
Power over Ethernet	—		
Supply Voltage	12 VDC, Power Adapter 100 ~ 240 VAC 50, 60Hz included		100 ~ 240 VAC, 50Hz / 60Hz
Power Consumption	≤ 12 W without harddisk	≤ 8 W without harddisk	



GD-ML-DP2230HD GD-ML-DP2430HD GD-ML-DP2730HD

	Professional	Professional	Professional
LCD Panel size	54.6 cm (21, 5") Diagonal AM-TFT LED Backlight	59.9 cm (23.6") Diagonal AM-TFT LED Backlight	68.5 cm (27") Diagonal AM-TFT LED Backlight
Pixels — Total	1920 (H) x 1080 (V)		
Pixel Pitch	0.248 mm (H) x 0.248 mm (V)		
Aspect Ratio	16 : 9		
Video Standard	PAL, NTSC		
Video Inputs	1x HDMI, 1x VGA, 1x USB		
Brightness	300 cd, m ²		
Contrast Ratio	1000:1		
Number of Colours	16.7 million		
Viewing Angle	170° (H) ~ 160° (V)		
Response Time	5 ms		
Audio Inputs	1-ch, RCA (2.0 Vp-p, 1kΩ)		
Speakers	2 x 2 W		
Vesa Mount	75 x 75 mm		
OSD (On Screen Display)	Yes, multi language		
Accessories included	Power Adapter and HDMI cable		
Regulation	CE, EAC, FCC, RoHS Compliant		
Power Consumption	Max. 21 W		
Supply Voltage	12 VDC, Power Adapter 100 ~ 240 VAC 50, 60Hz included		



THE MONITOR SERIES FROM GRUNDIG SECURITY: SCREENS WITH TRADITION!

Our latest monitor series impresses with its elegant design and ultra-thin screen edges.

At the same time, it meets the requirements of modern video systems. The devices are equipped with extra robust components to ensure reliable use 24 hours a day, 7 days a week, 365 days a year.

In addition, the panels have been specially selected for video surveillance applications and use technologies to prevent ghosting and offer high brightness and contrast values.



GU-CI-AC5617E
GU-CI-AC8616E



GU-BR-AJX01
Junction Box Pendant Mount



GU-BR-AJX02
Junction Box



GU-BR-AMW04
Wall Mount Bracket



GU-CI-AC5637E



GU-BR-AMW05
Wall Mount Bracket



GU-CI-AC5617V
GU-CI-AC8616V



GU-BR-AJX09
Junction Box Pendant Mount



GU-BR-AJX10
Junction Box



GU-BR-AMF02
Flush Mount Adapter



GU-BR-AMW04
Wall Mount Bracket



GU-CI-AC5637V



GU-BR-AJX06
Junction Box



GU-BR-AJX07
Junction Box Pendant Mount



GU-BR-AJX08
Dual Junction Box incl. PoE Switch



GU-BR-AMF01
Flush Mount Adapter



GU-BR-AMW05
Wall Mount Bracket



GU-CI-AC5617T
GU-CI-AC8616T



GU-BR-AJX01
Junction Box Pendant Mount



GU-BR-AJX02
Junction Box



GU-BR-AJX05
Junction Box Hinged



GU-CI-AC5637T



GU-BR-AJX01
Junction Box Pendant Mount



GU-BR-AJX02
Junction Box



GU-BR-AJX05
Junction Box Hinged



GU-BR-AJX01



GU-BR-AMP01
Pendant Mount Bracket



GU-BR-AMW01
Wall Mount Bracket



GU-BR-AJX06



GU-BR-AMP01
Pendant Mount Bracket



GU-BR-AMW01
Wall Mount Bracket



GU-BR-AJX07



GU-BR-AMP01
Pendant Mount Bracket



GU-BR-AMW01
Wall Mount Bracket



GU-BR-AJX08



GD-BR-AMW08
Wall Mount Bracket for PTZ Domes



GU-BR-AJX08A
Adapter Junction Box



GU-BR-AJX09



GU-BR-AMP01
Pendant Mount Bracket



GU-BR-AMW01
Wall Mount Bracket



GU-BR-AMW01



GU-BR-AMC01
Corner Mount Bracket



GU-BR-AML01
Pole Mount Bracket

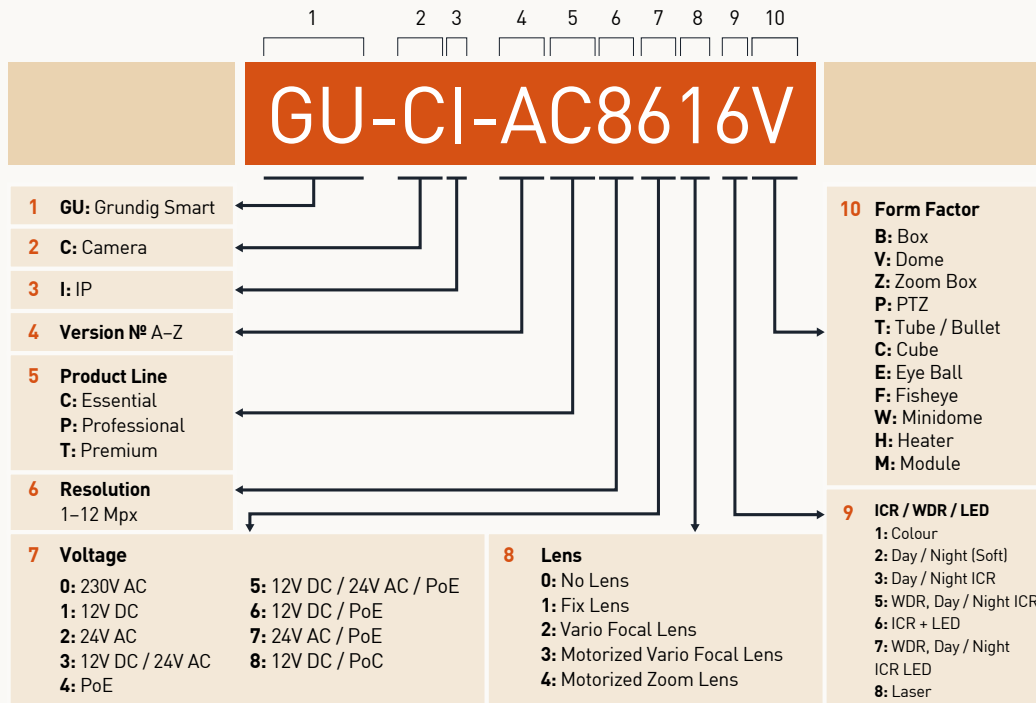


GU-BR-AMW02



GU-BR-AML01
Pole Mount Bracket

Structure and composition of the GRUNDIG Security article numbers



5 years Extended Guarantee

GRUNDIG Security offers a 5-year guarantee on all „SMART“, „PRO“ and „PREMIUM“ series' cameras. Our goal: to further support our customers by making project maintenance easier and more cost-effective. The 5-year guarantee applies to all electronic components of the products mentioned above. Mechanical wear and tear on moving parts is not included. Please refer to our general terms and conditions.



OUR AMBITION: THE PURSUIT OF A MORE SUSTAINABLE FUTURE

A holistic approach to sustainability and respect for all natural resources belong to our top priorities and are therefore an essential part of our DNA. This is also reflected in our products: they work as sustainably as possible while meeting the highest standards as regard to quality and aesthetics. During production, we consider the environment as much as possible, and we are always looking for ways to incorporate the idea of sustainability into our products.



100%
RECYCLABLE
CARDBOARD

Environmentally friendly packaging

Our environmentally friendly packaging with less colour print is made from 100% recyclable material. To save resources, our detailed operating instructions are available online for download. The quick reference guides that come with the devices are printed on 100% recycled paper. In addition, our mostly fanless devices are distinguished by their low power consumption, which reduces the cost of electricity consumption.

Identify licence plates

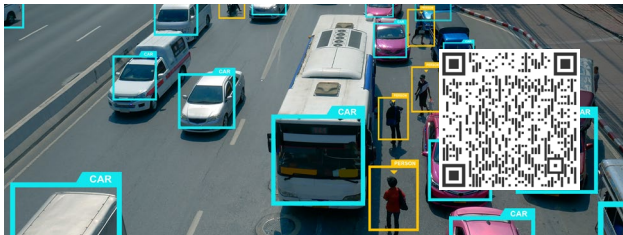


Scan the QR-code
and see the AI functions
of the smart product line
in action!

Manage queues



Classify persons & vehicles



Detect unusual noises: Dog Barking



Analyse crowds



Identify faces



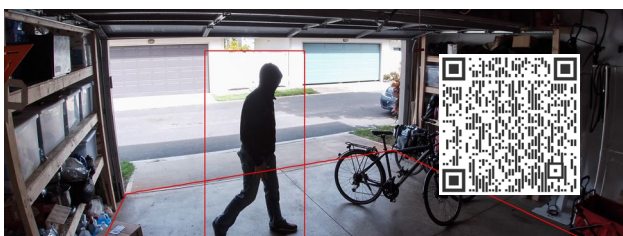
Detect unusual noises: Baby Crying



Count people/objects



Enter area



Detect unusual noises: Gunshot



Use Heat Map



Gedistribueerd door:
VSS Nederland B.V. | Zwolle

www.vssnederland.nl
info@vssnederland.nl

T. +31 38 - 4289420

GRUNDIG