

2024 H1 EN

PRODUCT BROCHURE

IP Surveillance Solutions

VIVOTEK

A Delta Group Company

VIVOTEK

A Delta Group Company

As one of the world's most trusted IP surveillance solutions provider, we deliver intelligent security, control, and management for a safer society.

Founded in Taiwan in 2000, we are widely recognized for our expansive technical capabilities in imaging and audio, specializing in IP cameras, video management software, and edge based AI video analytics. In 2017, we joined the Delta Group, a global leader in power and thermal management solutions, to serve as the security and intelligence core of Delta Building Automation Business.



Making Society's Most Trusted Intelligent Security Systems

Global Presence

Through a global network of over 200 distributors in more than 100 countries, we serve system integrators building intelligent solutions for end-users worldwide. VIVOTEK Inc. (TAIEX: 3454) was listed on the TWSE in 2011, and we have established offices in the U.S., Netherlands, India, Mexico, and Japan.

We Get The Picture

With more than 20 years at the forefront of the industry, we've driven breakthroughs in R&D, and built a solid technological foundation for the industry. It's based on these two decades of experience that we have the expertise to know what keeps business owners and security operators up at night.

Smarter Is Safer

Our AI-powered video analytics deliver improved overviews and real-time insights, giving security operators the information they need, when they need it, to ensure safe and secure operations. With intelligent technologies integrated into our surveillance solutions, users have the peace of mind that their sensitive information is secured against prying eyes.

Trusted Quality

Choosing VIVOTEK means choosing quality you can trust. We develop, test, and manufacture our industry leading products, technologies, and solutions in-house, meeting the highest international standards and regulations for quality management and environmental responsibility.

Seamless Integration, Meaningful Connection

The most robust and effective solutions for keeping people, assets, and data safe require many varied technologies to work seamlessly together. Our innovative surveillance solutions unlock new possibilities for a wide range of vertical applications, leveraging our two decades of industry expertise and global strategic partnerships.

Smarter Solutions for Smarter Setups

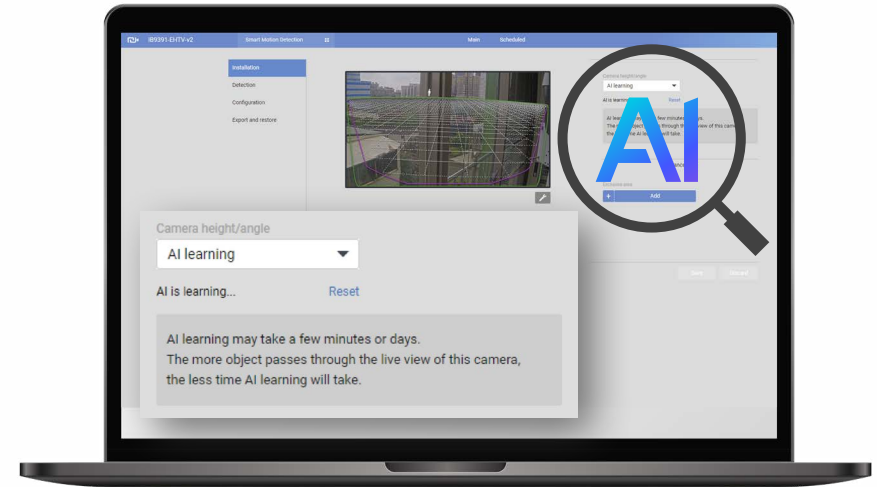
Advantages Offered by VIVOTEK AI Solution

✓ Self-Optimize for Precision

Our self-calibration feature is a game-changer. VIVOTEK AI cameras start self-calibrating the moment they power on, learning the scene and optimizing the algorithm for precise people and vehicle analytics results. Even if the field-of-view changes, they adapt seamlessly.

✓ No Need for Perspective Correction, No Analytics Settings

VIVOTEK AI eliminates the requirement for perspective correction and intricate analytics settings on the camera. No plugins or module installations on your system. With VIVOTEK AI, it's as simple as connecting and going.



AI optimizes itself for precision, saving time and reducing hassle

Seamless Integration for Streamline Results

Effortless Deployment of Surveillance System

✓ Zero Configuration Hassles

VIVOTEK network video recorders and video management systems effortlessly handle metadata from Vision Object Analytics with zero configuration hassles, eliminating the need for plugins or module installations.

✓ No Module or Plugin Installation Required

VIVOTEK NVR and VMS, purpose-built for simplicity, natively support metadata from Vision Object Analytics out-of-the-box, requiring no additional analytics modules or plugins simply connect and go.

✓ Seamless Integrated Solution

Incorporating edge computing in front-end cameras and back-end systems seamlessly connects software and hardware, prioritizing optimal user experience to humanize AI applications for a safer and smarter living environment.



Enhancing operational efficiency through video insights in analytics, notifications, and search

Operations Made Fast with Analytics Notification



Smart Motion Detection

Recognizes people activities with unaffected by changes in lighting, shadows, or other factors. Smart Motion Detection reduces false alarms and offers intelligent protection.



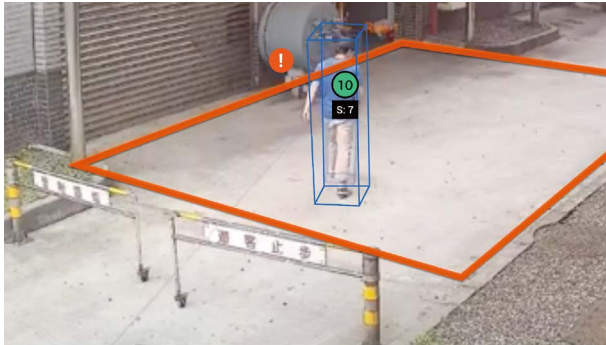
Line Crossing Detection

Detects individuals or groups of people crossing a virtual trip-wire, providing promptly alerting authorities to potential threats or unauthorized access.



Loitering Detection

Detects individuals or groups of people lingering in one area beyond a preset time threshold, offering heightened situational awareness to ensure timely responses and improved security management.



Intrusion Detection

Detects individuals entering or leaving a virtual area within the camera's field of view, delivering real-time monitoring capabilities to enhance security.



Crowd Detection

Identifies the number of individuals in a specific area. This enables stores and businesses to easily manage social distancing among customers, intelligently reducing the challenges of handling customer congestion.



Running Detection

Identifies the movement speed of individuals within a scene. In surveillance applications, high-speed running by individuals in locations like campuses, hospitals, factories, shopping malls, or banks may indicate potential abnormal situations.

Edge AI integrates artificial intelligence into cameras and sensors for real-time event analysis. Eliminating the need for a dedicated server to handle video analytics streamlines system setup and reduces overall costs. Experience increased flexibility in analytic applications, regardless of your system's deployment method.



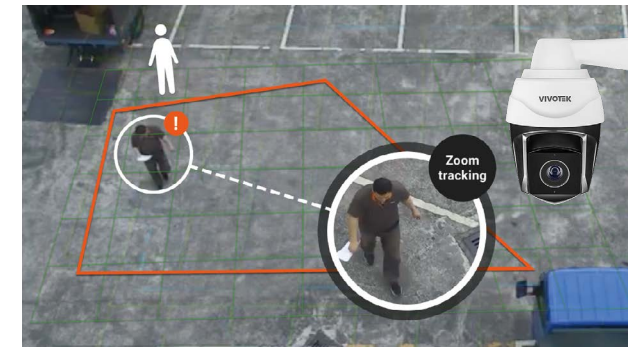
Restricted Zone Detection

Enforces security in high-risk areas by requiring individuals to obtain guest badges for entry. It can apply to various settings to prevent intrusions and secure against unauthorized access.



Facial Recognition

Automates employee clock-in reports, streamlines event sorting, and offers highly accurate facial detection. Users can assign people to groups for easier identification.



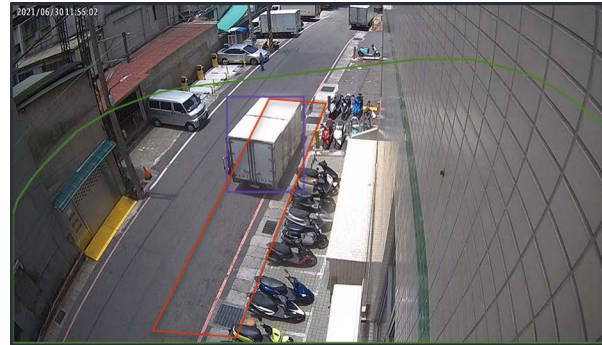
Smart Tracking Advanced

Utilizes intelligent object tracking through speed dome cameras. It is well-suited for monitoring individuals with features like intrusion detection and automated alerts.



Missing or Unattended Object Detection

Identifies the removal of a predefined asset from a scene, providing prompt alerts in case of unauthorized asset movement or potential threats.



Parking Violation Detection

Promptly alerts authorities to illegal parking, reducing traffic congestion at pickup points and preventing violations near essential areas like fire hydrants and hospitals.

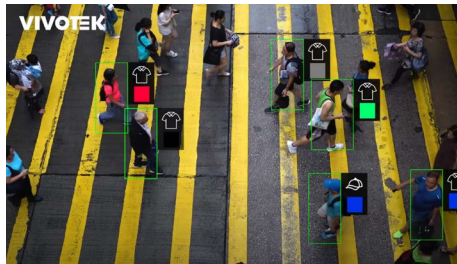


License Plate Recognition

Delivers precise data for access control. Alongside license plate and vehicle type classification, it streamlines incident searches and KYC data collection, and boosts efficiency.

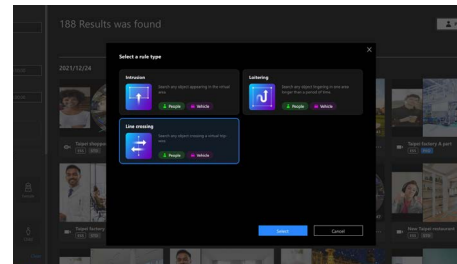
Deep Search Made Fast

Search with Ease



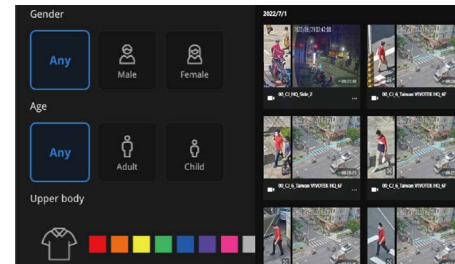
Deep Search

Revolutionize post-event search functionality through AI, offering Attribute Search, Scene Search, and Re-Search. By harnessing metadata, you can bid farewell to manual frame-by-frame video scanning. Post-event search becomes swift and effortless as you incorporate multiple attributes and rules. This feature is accessible in VSS and our latest Core+ AI NVRs.



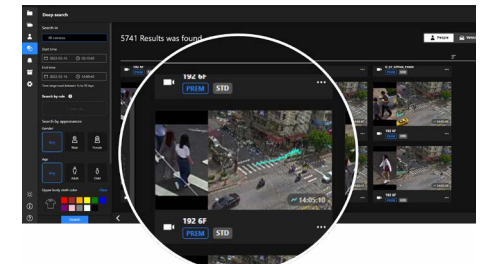
Scene Search

Efficiently review video footage. Scene Search enables rapid review of camera footage by employing intrusion, line crossing, or loitering with intrusion detection, simply draw a box around a point of interest, select a time frame, and instantly retrieve all instances where someone or a vehicle entered that area.



Attribute Search

Precision at your fingertips. Utilize specific attributes (e.g., gender, age group, clothing/vehicle color, vehicle type, etc.) to swiftly and accurately pinpoint individuals or vehicles of interest. Attribute Search empowers users to fine-tune their search criteria, from red vehicles to blue-shirted males.

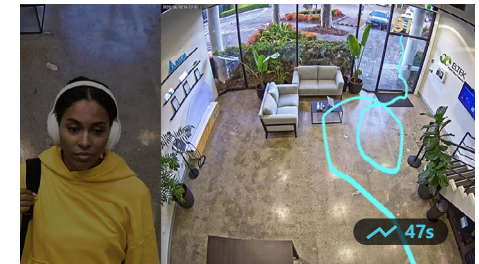
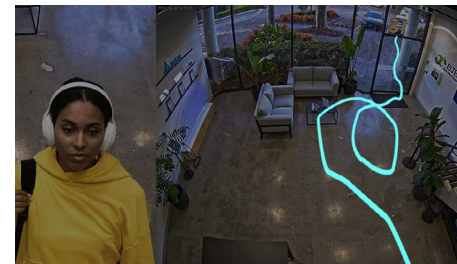
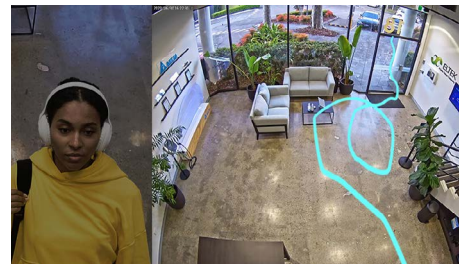
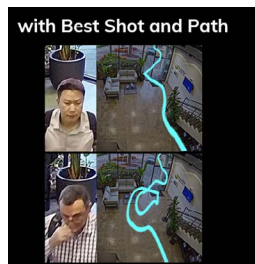


Re-Search

Tracking made easy. Once you've located a person of interest on one camera, initiate a Re-Search to track them across the entire surveillance system, spanning all cameras. This invaluable feature helps you monitor the activities of your subject throughout the property. Exclusively available on VSS Pro.

Find Your Evidence at a Glance

Turn Hours into Seconds



Best Shot

Captures the clearest view of a person or vehicle when they appear in front of the camera. Every search result includes a Best Shot, ensuring a clear identification of the subject of interest, even in images with multiple people or vehicles.

Path Extraction

Reveals the subject's trace without video playback. Accurate object tracking further minimizes duplicate search results, ensuring distinct outcomes for every search.

Start and End Location

The subject's path is marked with a clear starting and ending point, simplifying the trace identification of the person or vehicle without the need for video playback.

Duration of Stay

Displays the calculated time duration for the detected objects in the scene, empowering users to make quick, informed decisions and easily pinpoint the relevant video clip based on the calculated time in each scene.

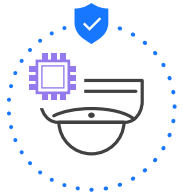
Cybersecurity

Cybersecurity Features



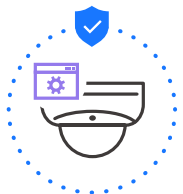
Trend-Micro IoT Security

Protects the device against brute force and cybersecurity attacks, as well as quarantine suspicious device behavior.



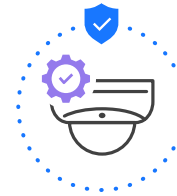
Signed Firmware

A device with signed firmware can validate the firmware before allowing installation.



Secure VADP

Secure VADP with digital signature and encryption capabilities makes it safer and more reliable for third-party integration.



Secure Boot

Secure boot ensures that unauthenticated code is rejected and protects the camera system from attacks or infections by malicious external code.



Secure Console

Permission from VIVOTEK with key based authentication is the only way to access, providing a safer connection for the surveillance system.

Cybersecurity Solution



Cybersecurity Alarm Management with Instant Alerts

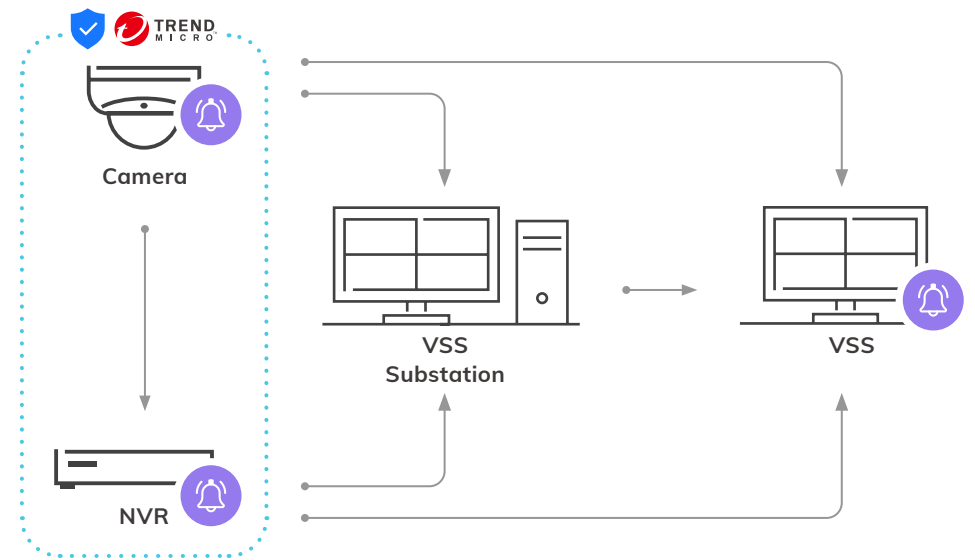
Once event notifications in network cameras and VSS VMS have been set up, VIVOTEK's surveillance solution will be immediately alerted when cyberattacks occur.



Event Reports with Cyber Risk Dashboard

Quickly know attack trend and status, and acquire attack information in order to diagnose your network promptly on VSS and NVRs.

Cybersecurity Architecture

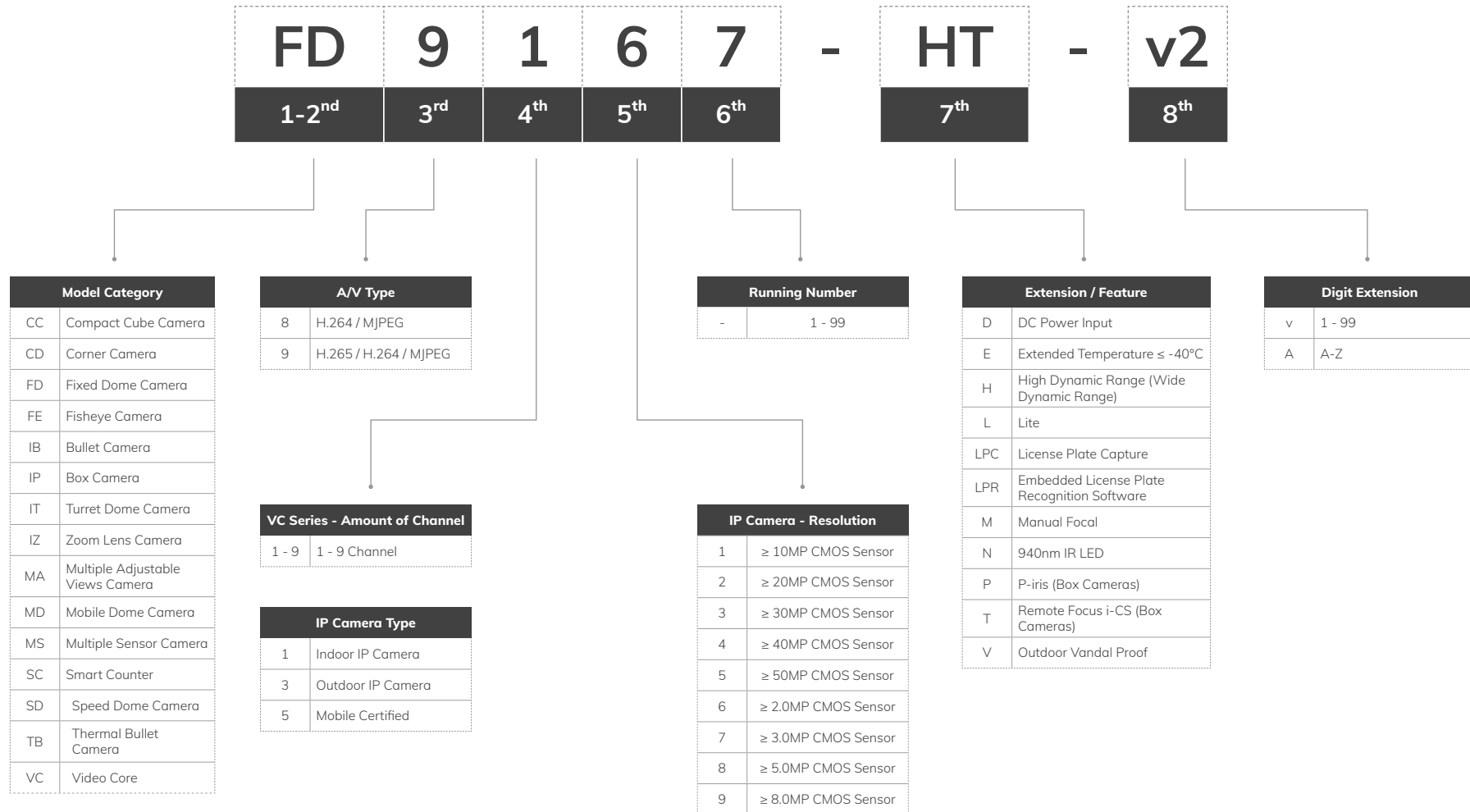


Contents

Network Cameras	14	Network Audio	41
Naming Rule	14	PoE Network Products	44
S Supreme Series.....	15	Commercial Series.....	45
V Versatile Series	20	Industrial Series.....	46
C Competitive Series.....	24	Long Range Solution.....	46
Facial Recognition	29	Outdoor Series.....	46
Video Management Software	33	PoE Accessories.....	47
VAST Security Station	33	Solution Integration Alliance	49
Network Video Recorders	36		
Naming Rule	36		
S Supreme Series.....	37		
V Versatile Series	39		

Network Cameras

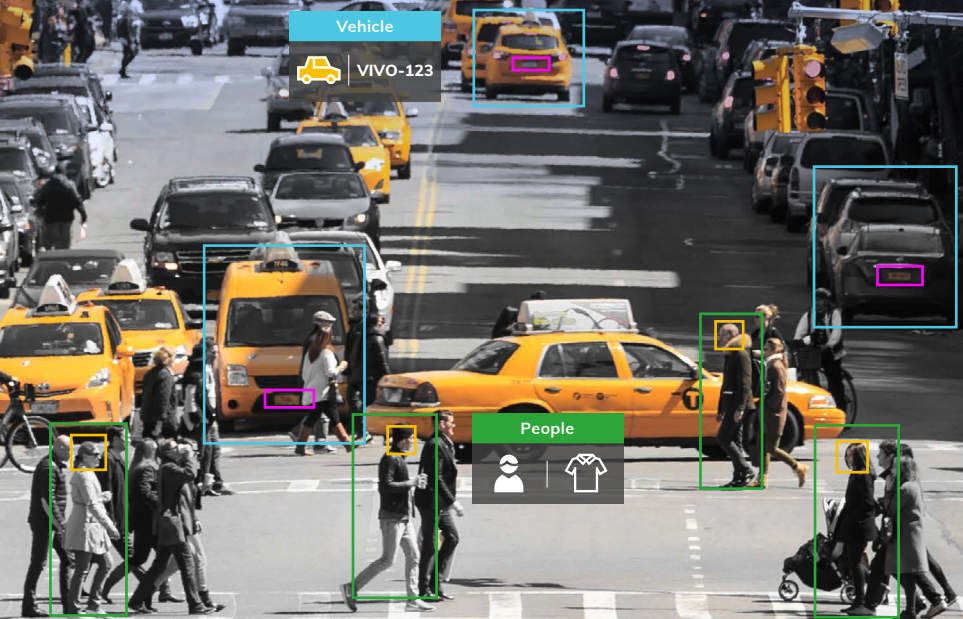
Naming Rule



Network Camera

Supreme Series

Unlock the power of industry-leading analytics with Supreme series camera. Designed with a one-for-multiple form factor, it provides a broad field of view and tailored features to implement to various scenarios. See more, see smarter.



Special Form Factor

Discover special form factor camera tailored to meet unique needs. Simplify setup to perfectly match niche applications.



AI Analytics

Advanced AI engine for people and vehicle detection, and activities with high image quality.



Deep Search

No needs to scroll through the video footage frame by frame. Factoring in multiple attributes and rules makes post-event search faster and easier.



Model Name	FD9391-EHTV-v2	FD9365-EHTV-v2	CD9381-HNVF2	CD9381-HNTV	IB9391-EHTV-v2
Type	8MP Dome	2MP Dome	5MP Corner Dome		8MP Bullet
Camera Features					
Image Sensor	1/1.8" Progressive CMOS	1/2" Progressive CMOS	1/2.7" Progressive CMOS		1/1.8" Progressive CMOS
Focal Length	f = 4.4 ~ 10.2 mm	f = 4 ~ 9 mm	f = 2.4 mm	f = 2.8 ~ 8 mm	f = 4.4 ~ 10.2 mm
Field of View	110° ~ 43° (H) 57° ~ 24° (V)	120° ~ 46° (H) 60° ~ 26° (V)	124° (H) 92° (V)	95° ~ 41° (H) 69° ~ 31° (V)	100° ~ 43° (H) 50° ~ 24° (V)
WDR Technology	WDR Pro	WDR Pro II	WDR Pro		
Day/Night	Yes				
Illuminators	50 meters with Smart IR III, IR LED*4		10 meters with Smart IR, IR LED*2		50 meters with Smart IR III, IR LED*4
Minimum Illumination	0.01 lux @ F1.38 (Color)	0.040 lux @ F1.3 (Color)	0.07 lux @ F2.1(Color)	0.085 lux @ F2.1(Color)	0.01 lux @ F1.38 (Color)
Pan Range	±175°		-		±180°
Storage	MicroSD/SDHC/SDXC card and NAS				
Video/ Audio/ Network					
Compression	H.265, H.264, MJPEG				
Maximum Frame Rate	30 fps @ 3840x2160	60 fps @ 1920x1080	30 fps @ 2560x1920		30 fps @ 3840x2160
Interface	Built-in microphone External microphone Input External line output		Built-in microphone External Audio Input External Audio output		External microphone input External line output
ONVIF	Profile G, S, T				
AI Analytics					
VISION Object Analytics	* Object Detection * Attribute Extraction Re-Search Extraction Path Extraction				
General					
Connectors	RJ-45 cable connector for 10/100 Mbps PoE network connection				
	Built-in Microphone Audio line input / Audio line output DC 12V power input / AC 24V power input Digital input*2 Digital output*2 Micro USB		Built-in Microphone Micro USB		Audio line input / Audio line output DC 12V power input / AC 24V power input Digital input*3 Digital output*3 Micro USB
Power Consumption	PoE: 14.25W DC 12V: 14.40W AC 24V: 11.64W	PoE: 13.11W DC 12V: 14.00W AC 24V: 10.79W	PoE: Max. 10.36 W DC 12V: Max. 9.96 W AC 24V: Max. 18 W		PoE: 19.38W DC 12V: 15.84W AC 24V: 16.52W
Dimensions	Ø 174 x 123 mm		226 x 221 x 112 mm		Ø 153 x 283 mm
Certifications	IK10+, IP66/67, NEMA 4X, IP6K9K		IK10+, IP66/67, NEMA 4X		IK10, IP66/67, NEMA 4X
Operating Temperature	-50°C ~ 60°C (-58°F ~ 140°F)		-10°C ~ 55°C (14°F ~ 122°F)		-50°C ~ 60°C (-58°F ~ 140°F)

* Object Detection: People, Vehicle (4-wheeled, 2-wheeled)

* Attribute Extraction: People (gender, clothing color, bag, hat), Vehicle (bike, bus, car, motorcycle, truck, color)



IB9365-EHTV-v2



TB9330-E



TB9331-E



FE9391-EHV-v2



FE9191-H-v2

Type	2MP Bullet	Thermal Bullet		12MP Fisheye	
Camera Features					
Image Sensor	1/2" Progressive CMOS	Uncooled Vox Infrared Detector		1/2.3" Progressive CMOS	
Focal Length	f = 4 ~ 9 mm	f = 8.8/19/35/50 mm		f = 1.22 mm	
Field of View	100° ~ 46° (H) 52° ~ 26° (V)	38.3° (H), 26.1° (V) [8.8mm] 18.3° (H), 12.3° (V) [19mm] 10° (H), 6.7° (V) [35mm] 7° (H), 4.7° (V) [50mm]	69.6° (H), 49.7° (V) (8.8mm) 35.7° (H), 24.2° (V) [19mm] 19.8° (H), 13.3° (V) [35mm] 14° (H), 9.3° (V) [50mm]	180° (H) 180° (V)	
WDR Technology	WDR Pro II	-		WDR Pro	
Day/Night	Yes	-		Yes	
Illuminators	50 meters with Smart IR III, IR LED*4	-		20 meters (50IRE) with Smart IR II, IR LED*4	-
Minimum Illumination	0.040 lux @ F1.3 (Color)	-		0.1 lux @ F2.0 (Color)	
Pan Range	±180°	-		-	
Storage	MicroSD/SDHC/SDXC card and NAS				
Video/ Audio/ Network					
Compression	H.265, H.264, MJPEG				
Maximum Frame Rate	60 fps @ 1920x1080	30 fps @ 384x256	30 fps @ 720x480	30 fps @ 2944x2944	
Interface	External microphone input / External line output			Built-in microphone	
ONVIF	Profile G, S, T	Profile G, S		Profile G, S, T	
AI Analytics					
VISION Object Analytics	* Object Detection * Attribute Extraction Re-Search Extraction Path Extraction	-		* Object Detection * Attribute Extraction Re-Search Extraction Path Extraction	
General					
Connectors	RJ-45 cable connector for 10/100 Mbps Network/PoE connection				
	Audio line input / Audio line output DC 12V power input / AC 24V power input Digital input *3 / Digital output*3 Micro USB	Audio input / Audio output DC 12V power input / AC 24V power input Digital input / Digital output BNC RS485		-	
Power Consumption	PoE: 22.23W DC 12V: 17.28W AC 24V: 18.26W	PoE: Max. 14 W DC 12V: Max. 11 W AC 24V: Max. 12.4 W		Max. 22.5 W	Max. 9 W
Dimensions	Ø 153 x 283 mm	w/ junction box: 121 x 121 x 472 mm (8.8mm) 121 x 121 x 453 mm (19mm) 121 x 121 x 456 mm (35/50mm)		Ø 150 x 68.2 mm	
Certifications	IK10, IP66/67, NEMA 4X	IK10, IP66/67, NEMA 4X		IK10, IP66, NEMA 4X	IK10
Operating Temperature	-50°C ~ 60°C (-58°F ~ 140°F)	-50°C ~ 60°C (-58°F ~ 140°F)		-40°C ~ 55°C (-40°F ~ 131°F)	-10°C ~ 50°C (14°F ~ 122°F)

* Object Detection: People, Vehicle (4-wheeled, 2-wheeled)

* Attribute Extraction: People (gender, clothing color, bag, hat), Vehicle (bike, bus, car, motorcycle, truck, color)



FE9192-H



FE9382-EHV-v2



NEW MS9321-EHV-v2



MA9322-EHTVL



NEW IP9191-HT-V2

Model Name	FE9192-H	FE9382-EHV-v2	NEW MS9321-EHV-v2	MA9322-EHTVL	NEW IP9191-HT-V2
Type	12MP Fisheye	6MP Fisheye	20MP Panoramic	20MP Multi-Sensor	8MP Box
Camera Features					
Image Sensor	1/2.3" Progressive CMOS	1/1.8" Progressive CMOS	1/2.8" Progressive CMOS	1/2.7" Progressive CMOS	1/1.8" Progressive CMOS
Focal Length	f = 1.22 mm	f = 1.245 mm	f = 3.8 mm	f = 3.7 ~ 7.7mm	f = 2.8 ~ 8.5 mm
Field of View		180° (H) 180° (V)	180° (H) 65° (V)	88.6° ~ 40.1° (H) 61.2° ~ 28.6° (V)	119° ~ 46° (H) 63° ~ 26° (V)
WDR Technology			WDR Pro		
Day/Night			Yes		
Illuminators	-	20 meters with Smart IR II, IR LED*4	30 meters with Smart IR II, IR LED*4	30 meters with Smart IR	-
Minimum Illumination	0.1 lux @ F2.0 (Color)	0.065 lux @ F1.6 (Color)	0.055 lux @ F2.0 (Color)	0.035 lux @ F1.9 (Color)	0.01 lux @ F1.5 (Color)
Pan Range			±90°		
Storage	MicroSD/SDHC/SDXC card and NAS				
Video/ Audio/ Network					
Compression			H.265, H.264, MJPEG		
Maximum Frame Rate	30 fps @ 2944x2944	30 fps @ 2048x2048	30 fps @ 6912x2624	12 fps @ 2688x1920	30 fps @ 3840x2160
Interface	Built-in microphone	Built-in microphone External line output	Built-in microphone External microphone Input External line output	Built-in microphone	External microphone input External line output
ONVIF	Profile G, S, T				
AI Analytics					
VISION Object Analytics		* Object Detection * Attribute Extraction Re-Search Extraction Path Extraction		-	* Object Detection * Attribute Extraction Re-Search Extraction Path Extraction
General					
Connectors	RJ-45 cable connector for 10/100 Mbps PoE network connection		RJ-45 cable connector for 10/100/1000 Mbps Network/PoE connection		
			Audio input / Audio output AC 24V power input Digital input / Digital output		Audio input / Audio output AC 24V power input *1 DC 12V power input *1 Digital input *2 Digital output *2 RS485*1 BNC *1
Power Consumption	Max. 9 W	Max. 12.5 W	AC 24V: Max. 16.4 W PoE: Max. 18.81 W	Max: 25.5 W	DC 12V: Max. 8.88 W AC 24V: Max. 17 W PoE: Max. 10 W
Dimensions	Ø 82 x 122 mm	Ø 150 x 68.2 mm	308 x 167 x 130 mm	Ø 267x114 mm (Main body) Ø 275x118 mm (w/ bracket)	155 x 70 x 61 mm (w/o lens) 210 x 70 x 66 mm (w/ lens)
Certifications	-	IK10, IP66, NEMA 4X	IK10, IP66, IP6K9K	IK10, IP66	-
Operating Temperature	-10°C ~ 50°C (14°F ~122°F)	-40°C ~ 60°C (-40°F ~ 140°F)	-40°C ~ 55°C (-40°F ~ 131°F)	-40°C ~ 65°C (-40°F ~ 149°F)	-10°C ~ 60°C (14°F ~ 140°F)

* Object Detection: People, Vehicle (4-wheeled, 2-wheeled)

* Attribute Extraction: People (gender, clothing color, bag, hat), Vehicle (bike, bus, car, motorcycle, truck, color)



IP9165-HT-v2


NEW SD9394-EHL


SD9384-EHL



SD9368-EHL



SC9133-RTL

Model Name	IP9165-HT-v2	NEW SD9394-EHL	SD9384-EHL	SD9368-EHL	SC9133-RTL
Type	2MP Box	8MP Speed Dome	5MP Speed Dome	2MP Speed Dome	Counting
Camera Features					
Image Sensor	1/2" Progressive CMOS	1/2.8" Progressive CMOS	1/2.8" Progressive CMOS	1/2.8" Progressive CMOS	1/2.8" Progressive CMOS
Focal Length	f = 3.9 ~ 10 mm	f = 6.5 ~ 212 mm	f = 4.94 ~ 148.24 mm	f = 4.25 ~ 170 mm	f = 1.47 mm
Field of View	110° ~ 43° (H) 59° ~ 24° (V)	63.5° ~ 2.0° (H) 37.4° ~ 1.1° (V)	54.1° ~ 1.9° (H) 41.2° ~ 1.4° (V)	65.7° ~ 1.88° (H) 39.39° ~ 1.09° (V)	140° (H) 140° (V)
WDR Technology	WDR Pro II		WDR Pro		WDR Enhanced
Day/Night			Yes		
Illuminators	-	250 meters with Smart IR, IR LED*8	200 meters with Smart IR, IR LED*8	250 meters with Smart IR, IR LED*8	White Light & IR LED
Minimum Illumination	0.01 lux @ F1.5 (Color)	0.02 lux @ F1.4 (Color)	0.03 lux @ F1.3 (Color)	0.04 lux @ F1.6 (Color)	0 lux with illumination on
Pan Range			360° endless		
Storage		MicroSD/SDHC/SDXC card and NAS			MicroSD/SDHC/SDXC card
Video/ Audio/ Network					
Compression			H.265, H.264, MJPEG		
Maximum Frame Rate	60 fps @ 1920x1080	30 fps @ 3840x2160	30 fps @ 2560x1920	60 fps @ 1920x1080	30 fps @ 1792 x 1792
Interface		External microphone input / External line output			Built-in microphone
ONVIF		Profile G, S, T			-
AI Analytics					
VISION Object Analytics		* Object Detection * Attribute Extraction Re-Search Extraction Path Extraction			-
General					
Connectors	RJ-45 cable connector for 10/100/1000 Mbps Network/PoE connection	RJ-45 cable connector for 10/100 Mbps PoE network connection			M12 4-pin D-coded for Network/PoE M12 A-code 12-pin for DC power RS485 *2 Digital input *2 (max. 60V per port) Digital output *1
	Audio input / Audio output AC 24V power input *1 DC 12V power input*1 Digital input *2 / Digital output *2 RS485*1 BNC *1	Audio line input / Audio line output DC 48V power input / AC 24V power input Digital input*2 / Digital output*1 RS-485*1			
Power Consumption	DC 12V: Max. 8.88 W AC 24V: Max. 17 W PoE: Max. 10 W		DC 48V: Max. 51 W AC 24V: Max. 51 W PoE: Max. 51 W		PoE: Max. 12.5 W DC: Max. 13.3 W
Dimensions	155 x 70 x 61 mm (w/o lens) 210 x 70 x 66 mm (w/ lens)		256 x 336 mm		140 (D) x 76 (W) x 42 (H) mm
Certifications	-		IK10, IP66, NEMA 4X		IK10, IP66
Operating Temperature	-10°C ~ 60°C (14°F ~ 140°F)	-40°C ~ 55°C (-40°F ~ 140°F)		-40°C ~ 60°C (-40°F ~ 122°F)	-30°C ~ 60°C (-22°F ~ 140°F)

* Object Detection: People, Vehicle (4-wheeled, 2-wheeled)

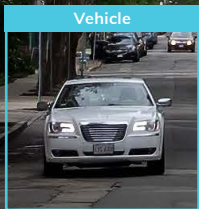
* Attribute Extraction: People (gender, clothing color, bag, hat), Vehicle (bike, bus, car, motorcycle, truck, color)



Network Camera Versatile Series

Experience excellent image and powerful AI surveillance solutions with Versatile series camera.

Packed with advanced, feature-rich options designed to adapt to diverse applications, it promises consistent performance and versatile functionality.



AI Analytics

Elevate your surveillance with built-in Smart VCA for precise people/vehicle detection and accurate activity monitoring.



Robust Housing & Security Design

Versatile cameras are certified to offer robust weather protection and enhance security defenses against cyber threats and attacks.



Easy Installation

These cameras feature modular design, allowing for easy installation in simple steps. This not only saves time but also reduces labor costs.


NEW FD9387-EHTV-V3


FD9389-EHTV-v2



FD9389-EHV-v2


NEW FD9187-HT-V3


FD9189-HT-v2



FD9189-H-v2

Type	SMP Outdoor Dome			SMP Indoor Dome		
Camera Features						
Image Sensor	1/2.8" Progressive CMOS	1/2.7" Progressive CMOS	1/2.7" Progressive CMOS	1/2.8" Progressive CMOS	1/1.8" Progressive CMOS	1/2.7" Progressive CMOS
Focal Length	f = 2.7~13.5/ 7~22 mm	f = 2.8 ~ 10 mm	f = 2.8 mm	f = 2.7~13.5/ 7~22 mm	f = 4.4 ~ 10.2 mm	f = 2.8 mm
Field of View	100.1° ~ 29.9° (H), 71.8° ~ 22.4° (V) [2.7-13.5mm] 39.3° ~ 15.4° (H), 28.8° ~ 11.6° (V) [7-22mm]	95° ~ 41° (H) 69° ~ 31° (V)	103° (H) 76° (V)	100.1° ~ 29.9° (H), 71.8° ~ 22.4° (V) [2.7-13.5mm] 39.3° ~ 15.4° (H), 28.8° ~ 11.6° (V) [7-22mm]	100° ~ 43° (H) 50° ~ 24° (V)	103° (H) 76° (V)
WDR Technology	WDR Pro					
Day/ Night	Yes					
Illuminators	50 meters with Smart IR III, IR LED*4	30 meters with Smart IR, IR LED*4		50 meters with Smart IR III, IR LED*4	30 meters with Smart IR, IR LED*4	
Minimum Illumination	0.04 lux @ F1.8 (Color) [2.7-13.5mm] 0.035 lux @ F1.7 (Color) [7-22mm]	0.06 lux @ F1.8 (Color)	0.06 lux @ F2.0 (Color)	0.04 lux @ F1.8 (Color) [2.7-13.5mm] 0.035 lux @ F1.7 (Color) [7-22mm]	0.06 lux @ F1.8 (Color)	
Pan Range	±175°	>350°		±175°	>350°	
Storage	MicroSD/SDHC/SDXC card and NAS					
Video/ Audio/ Network						
Compression	H.265, H.264, MJPEG					
Maximum Frame Rate	30 fps @ 2560x1920					
Interface	Built-in microphone External microphone Input External line output	Built-in microphone		Built-in microphone External microphone Input External line output	Built-in microphone	
ONVIF	Profile G, S, T					
AI Analytics						
VISION Object Analytics	* Object Detection * Attribute Extraction Re-Search Extraction Path Extraction	** Object Detection Path Extraction		* Object Detection * Attribute Extraction Re-Search Extraction Path Extraction	** Object Detection Path Extraction	
General						
Connectors	RJ-45 cable connector for Network 10/100 Mbps PoE connection					
	Built-in Microphone Audio line input / Audio line output DC 12V power input Digital input*1 / Digital output*1 Micro USB	-		Built-in Microphone Audio line input / Audio line output DC 12V power input Digital input*1 / Digital output*1 Micro USB	-	
Power Consumption	Max. 12.95 W	Max. 12.3 W	Max. 8.55 W	Max. 12.95 W	Max. 9.7 W	Max. 6.3 W
Dimensions	Ø 173.6 x 122.6 mm	Ø 129 x 94 mm		Ø 173.6 x 122.6 mm	Ø 130 x 95 mm	
Certifications	IK10+, IP66/67, NEMA 4X, IP6K9K	IK10, IP66		IP54	-	
Operating Temperature	-40°C ~ 60°C (-40°F ~ 140°F)			-10°C ~ 50°C (14°F ~ 122°F)		

* Object Detection: People, Vehicle (4-wheeled, 2-wheeled)

** Object Detection: People, Vehicle (4-wheeled)

* Attribute Extraction: People (gender, clothing color, bag, hat), Vehicle (bike, bus, car, motorcycle, truck, color)



FD9367-EHTV-v2



FD9167-HT-v2



IT9389-H-v2



NEW IB9387-EHT-V3



IB9389-EHT-v2



IB9389-EH-v2

Model Name	FD9367-EHTV-v2	FD9167-HT-v2	IT9389-H-v2	NEW IB9387-EHT-V3	IB9389-EHT-v2	IB9389-EH-v2
Type	2MP Outdoor Dome		2MP Indoor Dome	5MP Turret Dome	5MP Outdoor Bullet	
Camera Features						
Image Sensor	1/2.8" Progressive CMOS			1/2.7" Progressive CMOS	1/2.8" Progressive CMOS	
Focal Length	f = 2.7 ~ 13.5 mm			f = 2.8 mm	f = 2.7~13.5/ 7~22/ 12-40 mm	
Field of View	110° ~ 33° (H) 55° ~ 18° (V)			103° (H) 76° (V)	100.1° ~ 29.9° (H), 71.8° ~ 22.4° (V) [2.7-13.5mm] 39.3° ~ 15.4° (H), 28.8° ~ 11.6° (V) [7-22mm] 24.2° ~ 8.3° (H), 18° ~ 6.3° (V) [12-40mm]	
WDR Technology	WDR Pro					
Day/ Night	Yes					
Illuminators	50 meters with Smart IR II, IR LED*4			30 meters with Smart IR LED*2	50 meters with Smart IR III, IR LED*4 [2.7-13.5/7-22mm] 100 meters with Smart IR III, IR LED*4 [12-40mm]	
Minimum Illumination	0.035 lux @ F1.4 (Color)			0.06 lux @ F2.0 (Color)	0.04 lux @ F1.8 (Color) [2.7-13.5mm] 0.035 lux @ F1.7 (Color) [7-22mm] 0.075 lux @ F2.2 (Color) [12-40mm]	
Pan Range	±175°			359°	-	
Storage	MicroSD/SDHC/SDXC card and NAS					
Video/ Audio/ Network						
Compression	H.265, H.264, MJPEG					
Maximum Frame Rate	60 fps @ 1920x1080			30 fps @ 2560x1920		
Interface	Built-in microphone External microphone Input / External line output			Built-in microphone	External microphone input External line output	
ONVIF	Profile G, S, T					
AI Analytics						
VISION Object Analytics	** Object Detection Path Extraction			* Object Detection * Attribute Extraction Re-Search Extraction Path Extraction		** Object Detection Path Extraction
General						
Connectors	RJ-45 cable connector for Network 10/100 Mbps PoE connection					
	Built-in Microphone Audio line input / Audio line output DC 12V power input Digital input*1 / Digital output*1 Micro USB			-	Built-in Microphone Audio line input / Audio line output DC 12V power input Digital input*1 / Digital output*1 Micro USB	
Power Consumption	PoE: Max. 9 W / DC 12V: Max. 9 W			Max. 7.4 W	Max. 12.95 W	
Dimensions	Ø 174 x 123 mm			Ø 122 x 99 mm (w/ mounting bracket) Ø 108 x 79 mm (w/o mounting bracket)	Ø 153 x 285.7 mm	
Certifications	IK10, IP66/67, NEMA 4X		IP54	IK08, IP66	IK10, IP66/67, NEMA 4X	
Operating Temperature	-40°C ~ 60°C (-40°F ~ 140°F)		-10°C ~ 50°C (14°F ~ 122°F)	-20°C ~ 50°C (-4°F ~ 122°F)		-40°C ~ 60°C (-40°F ~ 140°F)

* Object Detection: People, Vehicle (4-wheeled, 2-wheeled)

** Object Detection: People, Vehicle (4-wheeled)

* Attribute Extraction: People (gender, clothing color, bag, hat), Vehicle (bike, bus, car, motorcycle, truck, color)



IB9367-EHT-v2



MS9390-EHV-v2


NEW IP9181-HT-V2


SD9161-H-v2



VC9101

Model Name	IB9367-EHT-v2	MS9390-EHV-v2	NEW IP9181-HT-V2	SD9161-H-v2	VC9101
Type	2MP Outdoor Bullet	8MP Panoramic	5MP Box	2MP Indoor Speed Dome	Split Type Camera
Camera Features					
Image Sensor	1/2.8" Progressive CMOS	1/2.7" Progressive CMOS	1/2.8" Progressive CMOS	1/2.8" Progressive CMOS	1/2.7" Progressive CMOS
Focal Length	f = 2.7~13.5/ 5~50 mm	f = 2.8 mm	f = 2.8 ~ 8.5 mm	f = 5.1 ~ 51 mm	Pinhole CU9171-H(F): f = 3.7 mm Fisheye CU9183-H(F): f = 1.22 mm
Field of View	105° ~ 33° (H), 55° ~ 18° (V) [2.7-13.5mm] 47° ~ 8° (H), 26° ~ 5° (V) [5-50mm]	180° (H) 50° (V)	106.8° ~ 36.4° (H) 77.4° ~ 27.3° (V)	55.2° ~ 7.1° (H) 31.8° ~ 4.1° (V)	CU9171-H(F): 93° (H), 48° (V) CU9183-H(F): 180° (H), 180° (V)
WDR Technology	WDR Pro				
Day/Night	Yes				
Illuminators	50 meters with Smart IR II, IR LED*4 [2.7-13.5mm] 100 meters with Smart IR II, IR LED*4 [5-50mm]	20 meters with Smart IR , IR LED*8	-		
Minimum Illumination	0.035 lux @ F1.4 (Color) [2.7-13.5mm] 0.040 lux @ F2.0 (Color) [5-50mm]	0.018 lux @ F1.2 (Color)	0.01 lux @ F1.2 (Color)	0.14 lux @ F1.6 (Color)	CU9171-H(F): 0.045 lux @ F2.5 (Color) CU9183-H(F): 0.035 lux @ F2.0 (Color)
Pan Range	±180°	-			360° endless
Storage	MicroSD/SDHC/SDXC card and NAS				
Video/ Audio/ Network					
Compression	H.265, H.264, MJPEG				
Maximum Frame Rate	60 fps @ 1920x1080	30 fps @ 4864x1632	30 fps @ 2560x1920	60 fps @ 1920x1080	CU9171-H(F): 30 fps @ 2688x1520 CU9183-H(F): 30 fps @ 1920x1920
Interface	External microphone input External line output	Built-in microphone	External microphone input External line output		
ONVIF	Profile G, S, T				
AI Analytics					
VISION Object Analytics	** Object Detection Path Extraction	* Object Detection * Attribute Extraction Re-Search Extraction Path Extraction			-
General					
RJ-45 cable connector for Network 10/100 Mbps PoE connection					
Connectors	Audio input / Audio output DC 12V power input Digital input / Digital output	-	Audio input / Audio output AC 24V power input *1 / DC 12V power input*1 Digital input *2 / Digital output *2 RS485*1 BNC *1	Audio line input / Audio line output AC/DC 24V power input Digital input *2 / Digital output *1	Audio line input / Audio line output DC 12V power input Digital input *1 / Digital output *1
Power Consumption	PoE: Max. 10.77 W DC 12V: Max. 9W	Max. 20 W	DC 12V: Max. 8.88 W AC 24V: Max. 17 W PoE: Max. 10 W	PoE: Max. 17W AC/DC 24V: Max. 17 W	Max. 8.5 W
Dimensions	Ø 153 x 288 mm	165 x 112 x 97 mm (w/o sunshield) 165 x 100 x 119 mm (w/ sunshield)	155 x 70 x 61 mm (w/o lens) 210 x 70 x 66 mm (w/ lens)	Ø 172 x 157 mm	105 (W) x 84 (D) x 30 (H) mm
Certifications	IK10, IP66/67, NEMA 4X				
Operating Temperature	-40°C ~ 60°C (-40°F ~ 140°F)	-40°C ~ 55°C (-40°F ~ 131°F)	-10°C ~ 60°C (14°F ~ 140°F)	-10°C ~ 55°C (14°F ~ 131°F)	-10°C ~ 50°C (14°F ~ 122°F)

* Object Detection: People, Vehicle (4-wheeled, 2-wheeled)

** Object Detection: People, Vehicle (4-wheeled)

* Attribute Extraction: People (gender, clothing color, bag, hat), Vehicle (bike, bus, car, motorcycle, truck, color)

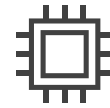
Network Camera Competitive Series

Explore essential video and audio functions paired with basic video analytics. Fulfill key demands with reliable and stable performance.



Amazing Bandwidth Control

Elevate surveillance with VIVOTEK Smart Stream technology. Prioritize crucial details, reduce bandwidth, and enjoy good image quality effortlessly.



Everyday Analytics

Enhance the camera's value with essential video analytics for smarter and more efficient target achievement.



Cost Effective

Lower costs to provide more competitive offerings with stable performance.



FD9388-HTV



FD9380-H



FD9368-HTV



FD9366-HV



FD9369

Type	5MP Outdoor Dome			2MP Outdoor Dome	
Camera Features					
Image Sensor	1/2.7" Progressive CMOS	1/2.7" Progressive CMOS	1/2.9" Progressive CMOS	1/2.9" Progressive CMOS	1/3.1" Progressive CMOS
Focal Length	f = 2.8 ~ 12mm	f = 2.8/ 3.6 mm	f = 2.8 ~ 12mm	f = 2.8/ 3.6 mm	f = 2.8 mm
Field of View	90° ~ 30° (H) 65° ~ 23° (V)	103° (H), 76° (V) [2.8mm] 76° (H), 59° (V) [3.6mm]	93° ~ 32° (H) 50° ~ 18° (V)	108° (H), 60° (V)[2.8mm] 89° (H), 47° (V) [3.6mm]	116° (H) 65° (V)
WDR Technology	WDR Pro				WDR Enhanced
Day/Night	Yes				
Illuminators	30 meters with Smart IR, IR LED*2			20 meters with Smart IR, IR LED*2	30 meters with Smart IR, IR LED*1
Minimum Illumination	0.035 lux @ F1.4 (Color)	0.03 lux @ F2.0 (Color)	0.055 lux @ F1.4 (Color)	0.13 lux @ F1.8 (Color) [2.8mm] 0.15 lux @ F2.0 (Color) [3.6mm]	0.08 lux @ F2.0 (Color)
Pan Range	353°	350°	353°	±30°	350°
Storage	MicroSD/SDHC/SDXC card and NAS				
Video/ Audio/ Network					
Compression	H.265, H.264, MJPEG				
Maximum Frame Rate	20 fps @ 2560x1920	20 fps @ 2560x1920	30 fps @ 1920x1080	30 fps @ 1920x1080	30 fps @ 1920x1080
Interface	Built-in microphone	-	Built-in microphone	Built-in microphone External line input	Built-in microphone
ONVIF	Profile G, S, T				
AI Analytics					
VISION Object Analytics	-				
General					
Connectors	RJ-45 cable connector for Network 10/100 Mbps PoE connection			Audio line input Digital input (30V, 1A) Digital output (12V, 50mA)	-
Power Consumption	Max. 12.95 W	Max. 6.49 W	Max. 12.95 W	Max. 5.5 W	Max. 6 W
Dimensions	Ø 133.7 x 103.8 mm	Ø 117.2 x 89.6 mm	Ø 133.7 x 103.8 mm	Ø 98 x 54 x 110.8 mm	Ø 110 x 85 mm
Certifications	IK10, IP66			IK10, IP66/67	IK10, IP66
Operating Temperature	-30°C ~ 60°C (-22°F ~ 140°F)			-25°C ~ 60°C (-13°F ~ 140°F)	-30°C ~ 55°C (-22°F ~ 131°F)

* All specifications are subject to change without notice.



FD9166-HN



FD9182-H



IT9388-HT



IT9380-H



IT9360-H

Type	2MP Indoor Dome	5MP Recessed	5MP Turret Dome		2MP Turret Dome
Camera Features					
Image Sensor	1/2.9" Progressive CMOS	1/2.7" Progressive CMOS	1/2.7" Progressive CMOS	1/2.7" Progressive CMOS	1/2.9" Progressive CMOS
Focal Length	f = 2.8/ 3.6 mm	f = 2.8 mm	f = 2.8 ~ 12mm	f = 2.8/ 3.6 mm	f = 2.8/ 3.6 mm
Field of View	109° (H), 59° (V) [2.8mm] 89° (H), 47° (V) [3.6mm]	103° (H) 76° (V)	90° ~ 30° (H) 65° ~ 23° (V)	103° (H), 76° (V) [2.8mm] 76° (H), 59° (V) [3.6mm]	109° (H), 59° (V) [2.8mm] 81° (H), 44° (V) [3.6mm]
WDR Technology	WDR Pro				
Day/Night	Yes				
Illuminators	10 meters with Smart IR, IR LED*4	-	30 meters with Smart IR, IR LED*2		
Minimum Illumination	0.07 lux @ F1.8 (Color) [2.8mm] 0.16 lux @ F2.0 (Color) [3.6mm]	0.03 lux @ F2.0 (Color)	0.035 lux @ F1.4 (Color)	0.03 lux @ F2.0 (Color)	0.065 lux @ F2.0 (Color)
Pan Range	±30°	±80°	360°		
Storage	MicroSD/SDHC/SDXC card and NAS				
Video/ Audio/ Network					
Compression	H.265, H.264, MJPEG				
Maximum Frame Rate	30 fps @ 1920x1080		20 fps @ 2560x1920		30 fps @ 1920x1080
Interface	Built-in microphone				
ONVIF	Profile G, S, T				
AI Analytics					
VISION Object Analytics	-				
General					
Connectors	RJ-45 cable connector for Network 10/100 Mbps PoE connection				
	Digital input (30V, 1A)				
Power Consumption	Max. 5.5 W	Max. 3.6W	Max. 9.8 W	Max. 6 W	
Dimensions	Ø 90 x 50mm	Ø 82 x 122 mm	Ø 120 x 90.5 mm	Ø 105 x 82.5 mm	Ø 105 x 82.5 mm
Certifications	-	IK10	IK10, IP66		
Operating Temperature	-10°C ~55°C (14°F~ 131°F)	-10°C ~ 50°C (14°F ~ 140°F)	-30°C ~ 60°C (-22°F ~ 140°F)	-20°C ~ 60°C (-4°F ~ 140°F)	

* All specifications are subject to change without notice.



IB9388-HT



IB9380-H



IB9368-HT



IB9369



FE9380-HV

Type	5MP Bullet		2MP Bullet		5MP Fisheye
Camera Features					
Image Sensor	1/2.7" Progressive CMOS	1/2.7" Progressive CMOS	1/2.9" Progressive CMOS	1/3.1" Progressive CMOS	1/2.7" Progressive CMOS
Focal Length	f = 2.8 ~ 12 mm	f = 3.6mm	f = 2.8 ~ 12 mm	f = 2.8/ 3.6 mm	f = 1.16 mm
Field of View	90°~ 30° (H) 65° ~ 23° (V)	76° (H) 59° (V)	93° ~ 32° (H) 50° ~ 18° (V)	118° (H), 65° (V) [2.8 mm] 90° (H), 49° (V) [3.6 mm]	180° (H) 180° (V)
WDR Technology	WDR Pro		WDR Enhanced		WDR Pro
Day/Night	Yes				
Illuminators	30 meters with Smart IR, IR LED*2			Built-in IR illuminators, effective up to 30 meters with Smart IR, IR LED*1	20 meters (50IRE) with Smart IR II, IR LED*4
Minimum Illumination	0.035 lux @ F1.4 (Color)	0.03 lux @ F2.0 (Color)	0.055 lux @ F1.4 (Color)	0.08 lux @ F2.0 (Color) [2.8mm] 0.1 lux @ F2.0 (Color) [3.6mm]	0.05 lux @ F2.25 (Color)
Pan Range	-				
Storage	MicroSD/SDHC/SDXC card and NAS				
Video/ Audio/ Network					
Compression	H.265, H.264, MJPEG				
Maximum Frame Rate	20 fps @ 2560x1920	20 fps @ 2560x1920	30 fps @ 1920x1080	30 fps @ 1920x1080	30 fps @ 1920x1920
Interface	-				Built-in microphone
ONVIF	Profile G, S, T				
AI Analytics					
VISION Object Analytics	-				
General					
Connectors	RJ-45 cable connector for Network 10/100 Mbps PoE connection				
Power Consumption	Max. 12.95 W	Max. 6.49 W	Max. 12.95 W	Max. 6 W	Max. 22.5 W
Dimensions	85 x 85 x 214.5 mm	Ø 91 x 176.8 mm	85 x 85 x 214.5 mm	Ø 91.1 x 181.5 mm	Ø 150 x 68.2 mm
Certifications	IK10, IP66				IK10, IP66, NEMA 4X
Operating Temperature	-30°C ~ 60°C (-22°F ~ 140°F)		-30°C ~ 60°C (-22°F ~ 140°F)		-30°C ~ 55°C (-22°F ~ 131°F) -40°C ~ 55°C (-40°F ~ 131°F)

* All specifications are subject to change without notice.



FE9180-H-v2



CC9381-HV



CC9380-HV



CC9160-H



CC9160-H(HS)

Type	5MP Fisheye	5MP Panoramic		2MP Panoramic	
Camera Features					
Image Sensor	1/2.7" Progressive CMOS	1/2.7" Progressive CMOS	1/2.7" Progressive CMOS	1/2.8" Progressive CMOS	1/2.8" Progressive CMOS
Focal Length	f = 1.16 mm	f = 1.45 mm	f = 1.45 mm	f = 1.66 mm	f = 1.66 mm
Field of View	180° (H) 180° (V)	180° (H) 120° (V)		180° (H) 100° (V)	
WDR Technology	WDR Pro				
Day/Night	Yes				
Illuminators	-	Built-in IR illuminators, effective up to 15 meters with Smart IR, IR LED*4		-	-
Minimum Illumination	0.05 lux @ F2.25 (Color)	0.11 lux @ F2.2 (Color)	0.11 lux @ F2.2 (Color)	0.03 lux @ F1.95 (Color)	
Pan Range	-				
Storage	MicroSD/SDHC/SDXC card and NAS				
Video/ Audio/ Network					
Compression	H.265, H.264, MJPEG				
Maximum Frame Rate	30 fps @ 1920x1920	30 fps @ 2560x1920		30 fps @ 1920x1080	
Interface	Built-in microphone				-
ONVIF	Profile G, S, T				
AI Analytics					
VISION Object Analytics	-				
General					
Connectors	RJ-45 cable connector for Network 10/100 Mbps PoE connection			Digital input Digital output	
Power Consumption	Max. 9 W	Max. 9.12 W	Max. 5 W	Max. 5 W	
Dimensions	Ø 150 x 68.2 mm	160 x 72 x 60 mm (Dome to rear panel), 39 mm (Flat to rear panel)	115 x 65 x 59 mm	52 x 120 x 39 mm (camera body) 61 x 147 x 41 mm (w/ bracket)	868 x 28 x 49.3 mm
Certifications	-	IK10, IP66		-	
Operating Temperature	-10°C ~ 50°C (14°F ~ 122°F)	-30°C ~ 50°C (-22°F ~ 122°F)		-10°C ~ 45°C (14°F ~ 113°F)	

* All specifications are subject to change without notice.

Facial Recognition

Hands Free Solution for Access Control



Hands-Free Access Control

Detect facial profiles and match with profiles in the database, achieving true hands-free access control.



Accurate Authentication

Facial images are captured and verified in real-time, providing 99% accurate authentication.



Huge Capacity of Facial Profiles

Enable to store up to 50,000 facial profiles. Administrators can categorize profiles into different groups and grant varied credentials to each group.

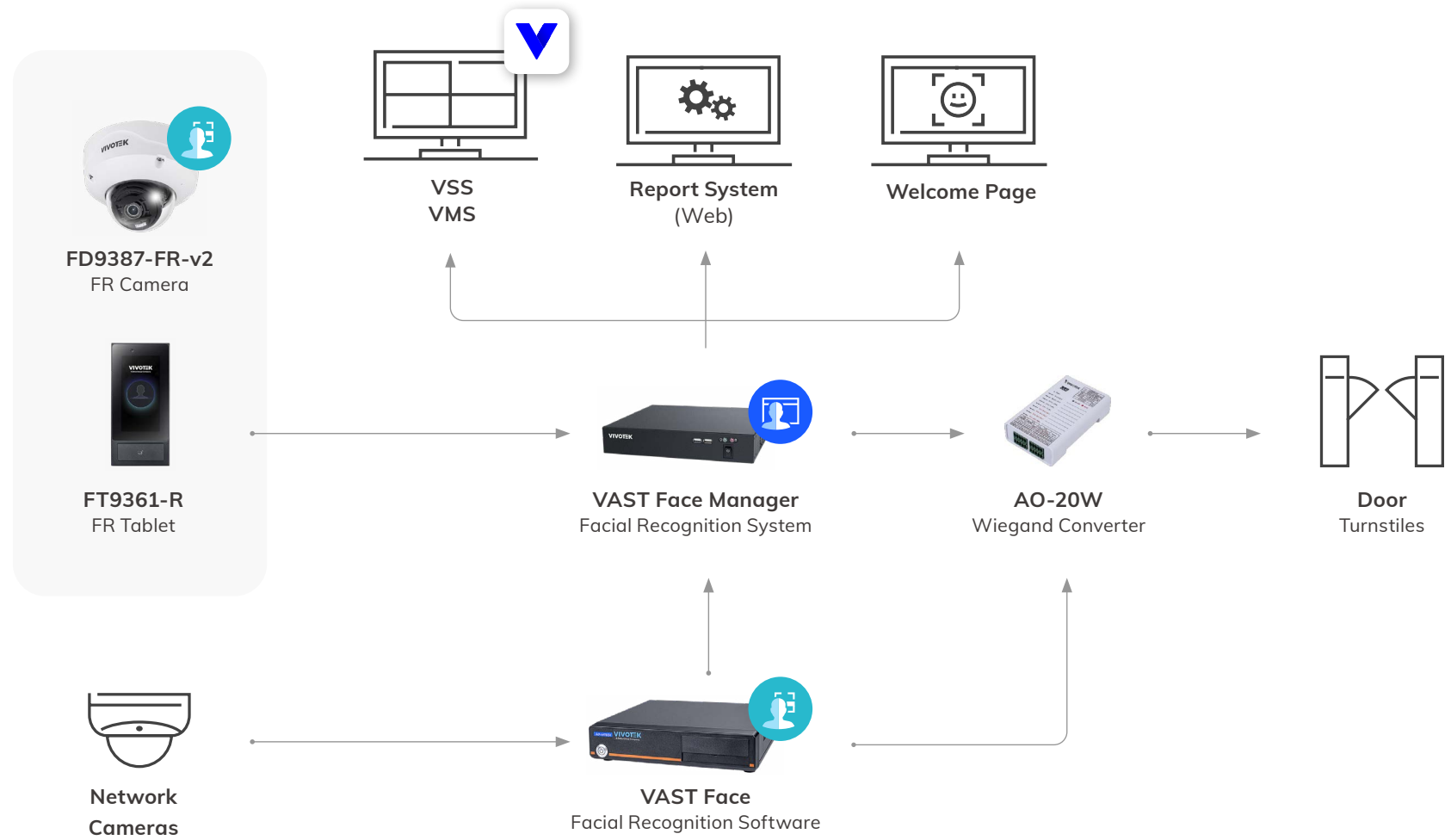


Dual Accreditation Available

Employees must meet both facial and card reader verification in order to pass through, strengthening security to a higher level.

* VAST Face FR CMS license required

Facial Recognition Architecture




NEW FD9387-FR-v3


FD9387-FR-v2

Type	Facial Recognition Camera	
Camera Features		
Lens Type	Motorized, Vari-focal, Remote Focus	
Focal Length	f= 7 ~ 22 mm	f= 2.7~ 13.5 mm
WDR Technology	WDR Pro	
Storage	MicroSD/SDHC/SDXC card and NAS	
Video/ Audio/ Network		
Compression	H.265, H.264, MJPEG	
Maximum Frame Rate	30 fps @ 2560x1920	
Audio Capability	Two-way audio (Full duplex)	
Interface	Built-in microphone External microphone Input External line output	External microphone Input External line output
Facial Recognition		
Performance	Up to 99% accuracy Supports recognition with mask Gender and age estimatio Privacy mode	
Numbers of face captures	30 faces per second	
Profile database	Up to 10,000 profiles	
Automatic create profilef or stranger	Yes	
Recognition Range	10M	5M
Integration	ONVIF profile S event push; HTTP/HTTPS Push in JSON format	
General		
Connectors	RJ-45 cable connector for 10/100 Mbps PoE network connection	
	Built-in Microphone Audio line input Audio line output DC 12V power input Digital input*1 Digital output*1 Micro USB	Audio line input Audio line output DC 12V power input AC 24V power input Digital input*2 Digital output*1
Power Input	DC 12V, PoE	AC 24V, DC 12V, PoE
Dimensions	Ø 173.6 x 122.6 mm	Ø 155 x 103.2 mm
Weight	1.30 kg	909 g
Certifications	IK10+, IP66/67, NEMA 4X, IP6K9K	IK10, IP66/67
Operating Temperature	-40°C ~ 60°C (-40°F ~ 140°F)	-30°C ~ 60°C (-22°F ~ 140°F)



FT9361-R

Type	Facial Recognition Tablet
ROM	8GB
IR Camera	1.3M @1280x1080
RGB Camera	1920x1080(2M)
WDR	RGB > 100dB
Low Lux	RGB < 0.01 lux @F1.2 IR < 0.01 lux @F1.2
Wiegand	24,26,36 bits
Recognition Distance	0.3M-1.5M
Recognition Speed	< 1 sec
Database Size	50,000 Profiles (Max.)
Audio	Built-in speaker
Dimensions	221.1 x 103.6 x 26.5 mm
Operating Temperature	20°C ~ 60°C / -4°F ~ 140°F
IP Ranking	IP65

* All specifications are subject to change without notice.



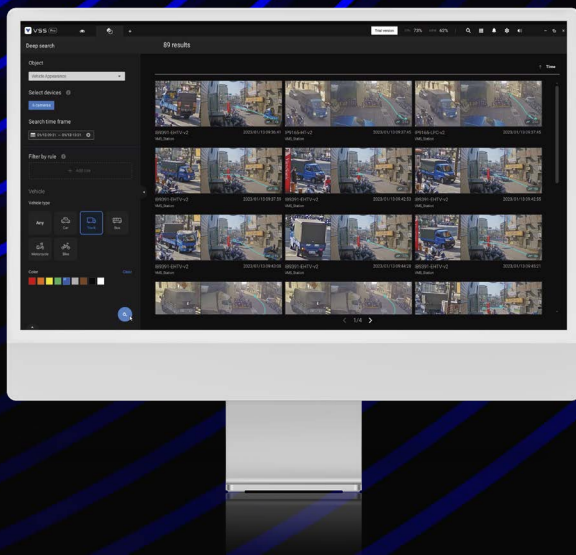
Model	IE9281-FM	IE9232-F
Type	VAST Face Manager	VAST Face Workstation
Hardware	Intel CPU: i7 Memory: DDR4 32GB RAM HDD: 2.5" 500GB SSD	Intel CPU: i7 Memory: DDR4 32GB RAM HDD: 2.5" 500GB SSD
OS	Linux	
Maximum Number of Faces in Database	50,000	
Maximum Number of Connected Devices	Up to 256	Up to 6
Power Input	100-240V AC	
Power Consumption	Max. 90W	
Dimensions	250 x 44.2 x 225 mm	
Weight	4 kg	
Safety Certifications	CE, FCC	
Support Device	FD9387-FR-V2&V3 FT9361-R IE9232-F	H.264 video stream via RTSP
Push Notification	Line, WhatsApp, Json, E-Mail	

* All specifications are subject to change without notice.

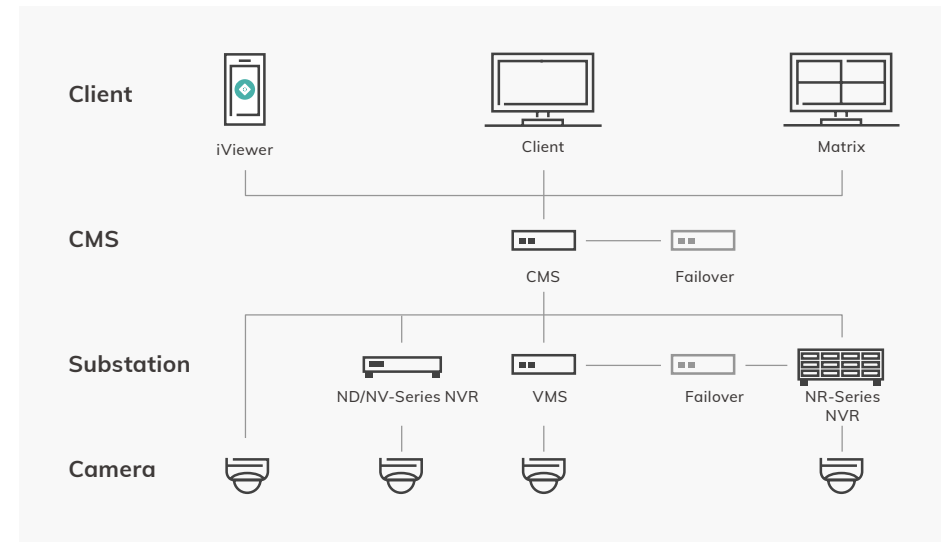
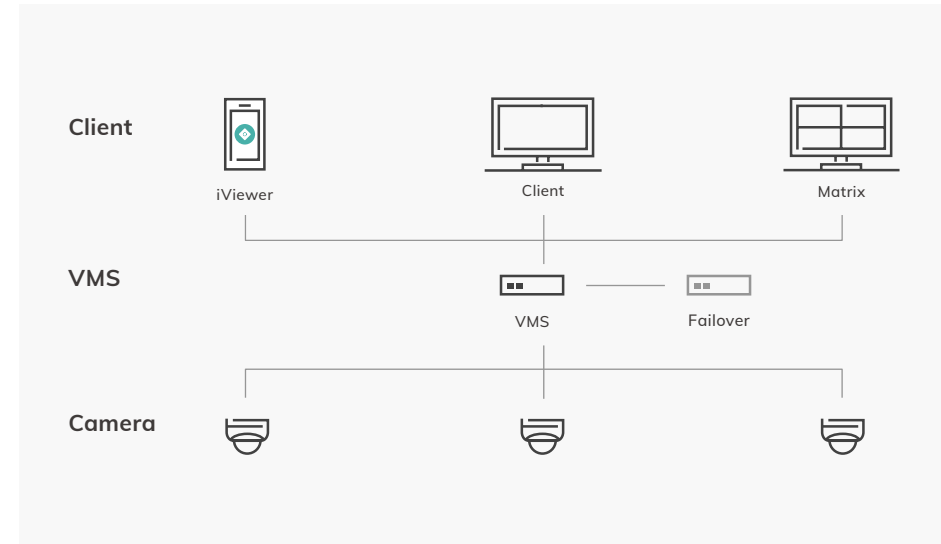
Video Management Software

VAST Security Station

VAST Security Station (VSS) is the next generation of VIVOTEK video management software. VSS expands the capabilities of previous VMS VAST 2, with newly added features including Enhanced User Defined Roles, Encrypted Video Recordings, and AI-based advanced post-event search function **Deep Search**. VSS is available in 3 different editions (Lite, Standard, Professional) to support security projects of all sizes, from small localized opportunities to multi-location enterprise operations.



VSS Architecture





Product Edition	VSS Lite	VSS Standard	VSS Professional
Product Overview	Free entry-level VMS for basic surveillance needs	Cost-effective solution for small and mid-size business	Designed for mid-size to large-scale projects requiring central management and 24/7 operations
Deployment			
Maximum Number of Cameras Per Server	32	128	320
Maximum Number of Clients Per Server		200	
Maximum Number of Simultaneous Video Streaming Output Per Server		2048	
Maximum Number of Substations Per System	0	32 (ND9000/NV series NVR)	700 (ND9000/NV series NVR, VSS Pro NR series NVR, VSS Professional Station)
Maximum Number of Cameras Per System	32	128	22400
Key Features			
Live view	✓	✓	✓
Recording	✓	✓	✓
Playback	✓	✓	✓
Backup	✓	✓	✓
Event	✓	✓	✓
Dashboard	✓	✓	✓
Alarms	-	✓	✓
E-map	-	✓	✓
VCA(Counting) Report	-	✓	✓
Video Wall (Matrix)	-	-	✓
Search			
Bookmark Search	✓	✓	✓
Event Search	✓	✓	✓
Alarm Search	-	✓	✓
Smart Search	-	✓	✓
Deep Search	Object Search	-	✓
	Attribute Search	-	✓
	Scene Search	-	✓
	Re-Search	-	-

* All specifications are subject to change without notice.

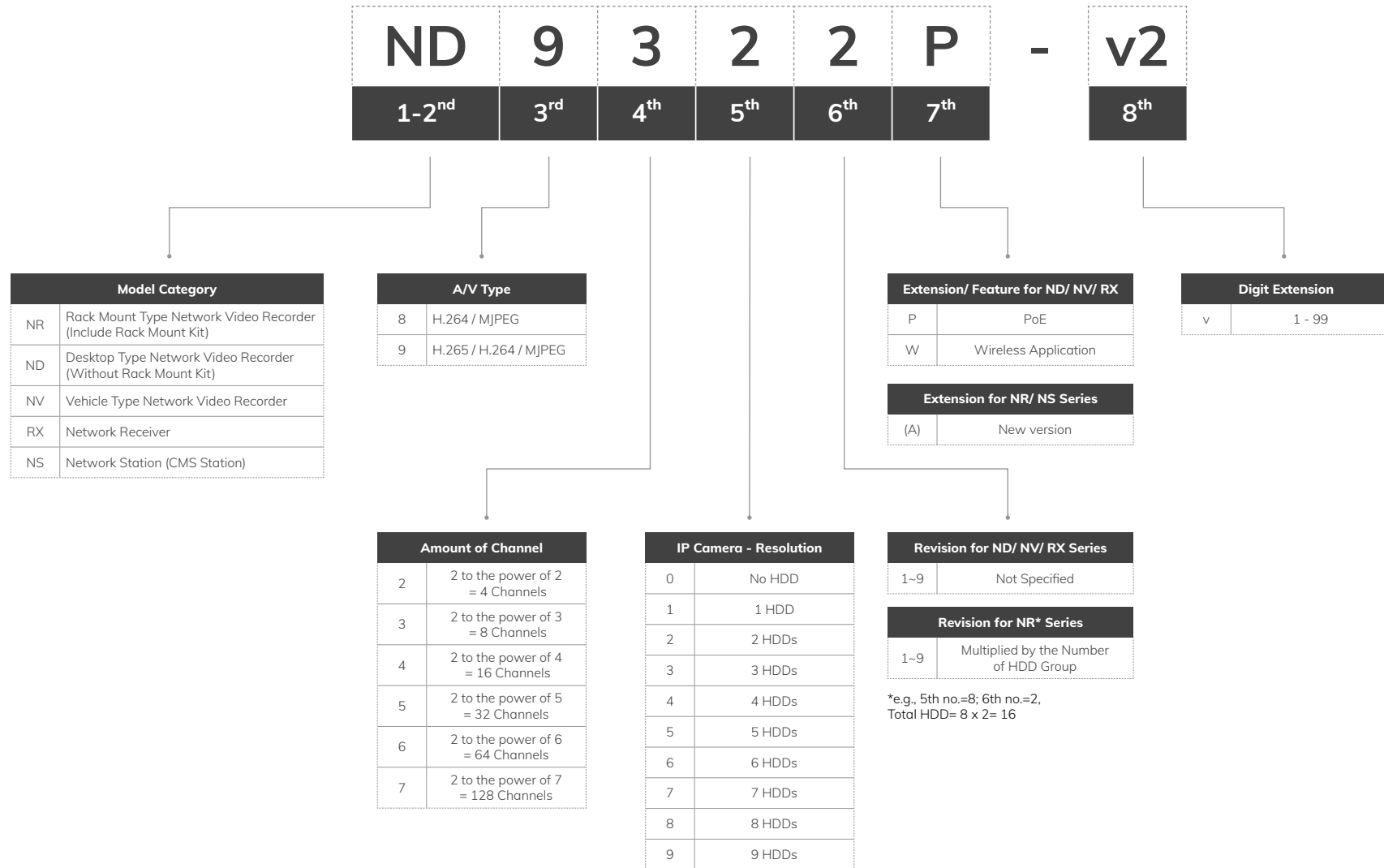


Product Edition	VSS Lite	VSS Standard	VSS Professional
Product Overview	Free entry-level VMS for basic surveillance needs	Cost-effective solution for small and mid-size business	Designed for mid-size to large-scale projects requiring central management and 24/7 operations
User Management			
User Role	Administrator	✓	✓
	Customizable	✓	✓
	User Pre-defined	-	✓
Video Encryption			
Digital Watermark	✓	✓	✓
Exported Video Encryption	-	V (AES-256 CTR)	V (AES-256 CTR)
Recording Encryption	-	-	V (AES-256 CTR)
Device Compatibility			
Camera	VIVOTEK 8000/9000 series	VIVOTEK 8000/9000 series	VIVOTEK 8000/9000 series
3rd Party Video Source	-	ONVIF, RTSP	ONVIF, RTSP
Substation	-	VIVOTEK ND9000/NV series NVR	VIVOTEK ND9000/NV series NVR VSS NR series NVR VSS Professional Station
Joystick	-	✓	✓
Network Audio Device	-	✓	✓
Wiegand Converter	-	✓	✓
I/O Box	-	✓	✓
Access Control	-	✓	✓
Integration			
Data Magnet	-	✓	✓
TCP Message	-	✓	✓
Failover			
CMS Failover	-	-	✓
Substation Failover	-	-	✓

* All specifications are subject to change without notice.

Network Video Recorders

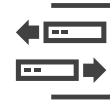
Naming Rule



Network Video Recorders

Supreme Series

Super and Outstanding Performance
Video Recorder for Large Scale Systems



Hot-Swappable HDD

Supports hot-swappable HDD bays with RAID 0/1/5/6/10/50/60, and NVR failover for reliable and secure recording data.



Built-in License with VSS Pro

Built-in license with VIVOTEK VAST Security Station Professional edition : Ready-to-go functionality with essential features, including 3rd Party Integration, Matrix, GIS, GPS Failover for CMS, and substation.



Deep Search with VSS Pro

With VIVOTEK VAST Security Station Professional edition to support Deep Search, quickly locating people and vehicles within recorded footage using attributes, trajectories, and even similar appearances.



Reliable Surveillance with Failover

Experience a secure and stable monitoring atmosphere with the Supreme series, featuring Failover for continuous operation.



NEW

NR9682-V3



NEW

NR9581-V3

Type	Recording Server	
Display		
Channels	64 channels (expandable to 192-CH)	32 channels (expandable to 128-CH)
Video Output	HDMI/DP/DVI/VGA	HDMI/DP/DVI/VGA
Display Resolution	HDMI: 4096x2160/ DP: 7680x4320 DVI: 1920x1200/ VGA: 1920x1200	HDMI: 4096x2160/ DP: 7680x4320 DVI: 1920x1200/ VGA: 1920x1200
Fisheye Dewarp	10, 1P, 1R, 1O3R, 4R, 2P, 4R Pro, 1O8R	10, 1P, 1R, 1O3R, 4R, 2P, 4R Pro, 1O8R
Video/ Record		
Video Compression	H.265/H.264/MJPEG/MPEG4	H.265/H.264/MJPEG/MPEG4
Max. Decoding Capability	H.264: 1920x1080 @ 360 fps H.265: 1920x1080 @ 180 fps	H.264: 1920x1080 @ 360 fps H.265: 1920x1080 @ 180 fps
Decoding Resolution (Local)	Up to 7680x2560	Up to 7680x2560
Recording Throughput	512 Mbps	512 Mbps
Storage/ General		
Hard Disk	3.5" SATA HDD*16 (Hot Swappable)	3.5" SATA HDD*8 (Hot Swappable)
RAID	RAID 0, 1, 5, 6, 10	RAID 0, 1, 5, 6, 10, 50, 60
Connectors	Ethernet 10/100/1000 RJ45 * 2 USB 2.0 x2, USB 3.0 x4 Microphone Audio Jack Input x1 3.5 Line Output Audio Jack x1	2.5 Gigabit Ethernet (RJ-45) x2 USB 2.0 x4, USB 3.2 x4 Microphone Audio Jack Input x1 3.5 Line Input Audio Jack x1 3.5 Line Output Audio Jack x1
Power Input	Redundant Power AC 100 ~ 240V/ 50 ~ 60Hz	Redundant Power AC 100 ~ 240V
Power Consumption	Max. 920 W	Max. 550 W
Installation, Management, and Maintenance	VSS Pro, Shepherd	VSS Pro, Shepherd
Dimensions	437 x 647 x 132 mm	437 x 647 x 89 mm
Advanced Features		
Cybersecurity Management	●	●
Data Magnet	●	●
Failover	●	●
LPR Solution	●	●
Smart VCA Event	●	●
Smart Search II	●	●
Deep Search	●	●
NDAA Compliance Product	●	●

* All specifications are subject to change without notice.

Network Video Recorders

Versatile Series

Simple to Navigate but Versatile



Core+ AI

VIVOTEK Core+ AI supporting Deep Search and Smart VCA, offering a faster and smarter user experience.



Dewarp Mode in Local and Web Client

Versatile NVR supports fisheye camera dewarp, offering multiple display modes from any angle for monitoring live view and playback.



Secure Connection & Reliable Compliance

No More Plug-in, Chrome Browser Supported, and Versatile NVR all NDAA compliant and have cyber protection via Trend Micro.



Centralized Operation with Multiple NVRs

Simplify operations across multiple network recorders with VIVOTEK video management software – VAST Security Station. Enjoy centralized operation and seamless notifications all in one place.



ND9442P/ ND9542P



ND9326P/ ND9426P

Type	Network Video Recorder	
Local Display		
Channels	Up to 16/32 channels	Up to 8/16 channels
Video Output	HDMI/VGA	HDMI/VGA
Display Resolution	3840x2160/ 1920x1080/ 1280x720	3840x2160/ 1920x1080/ 1280x720
Fisheye Dewarp	Local: 10,1P,1R,1O3R,1O8R, 1P3R Web: 10, 1R, 1P	Local: 10,1P,1R,1O3R,1O8R, 1P3R Web: 10, 1R, 1P
Video/ Record		
Video Compression	H.265/H.264/MJPEG	H.265/H.264/MJPEG
Max. Decoding Capability	H.265/H.264: 3840x2160 @ 90 fps	H.265/H.264: 3840x2160 @ 120 fps
Decoding Resolution (Local)	Up to 7680x2560	Up to 7680x2560
Recording Throughput	192 Mbps	192 Mbps
Storage/ General		
Hard Disk	3.5" SATA HDD*4	3.5" SATA HDD*2
RAID	RAID 0, 1, 5	RAID 0, 1
PoE	16x 802.3at/af Compliant PoE Ports (Total Max. 200 W)	8/16x 802.3at/af Compliant PoE Ports (Total Max. 120 W/200 W)
Connectors	Ethernet 10/100/1000 RJ45 *2 Alarm In *16, Alarm Out *8 USB 2.0 *2, USB 3.0 *1 Audio Output *1 Audio Input *1 (Reserved) RS485 (Reserved)	Ethernet 10/100/1000 RJ45 *2 Alarm In *4, Alarm Out *1 USB 2.0 *2, USB 3.0 *1 Audio Output *1 Audio Input *1 (Reserved)
Power Input	AC 100 ~ 240V/ 50 ~ 60Hz	AC 100 ~ 240V/ 50 ~ 60Hz
Power Consumption	Max. 300 W	Max. 190 W/ 270W
Installation, Management, and Maintenance	VSS, VAST 2, Shepherd, VIVOCloud, iViewer (iOS/Android)	VSS, VAST 2, Shepherd, VIVOCloud, iViewer (iOS/Android)
Dimensions	432 x 421 x 66 mm	365 x 315 x 44 mm
Advanced Features		
Smart VCA Event Search	●	●
Deep Search	●	●
Cybersecurity Management	●	●
Trend Micro IoT Security	●	●
NDAA Compliance Product	●	●

* All specifications are subject to change without notice.

Network Audio

Effective Action for Proactive Deterrence



Audio for Security

Event-triggered audio announcements to improve property security.



Automated Audio Clips

Support broadcasting live announcements or pre-recorded audio clips automatically when VSS alarm management is triggered.



Loitering Alerts

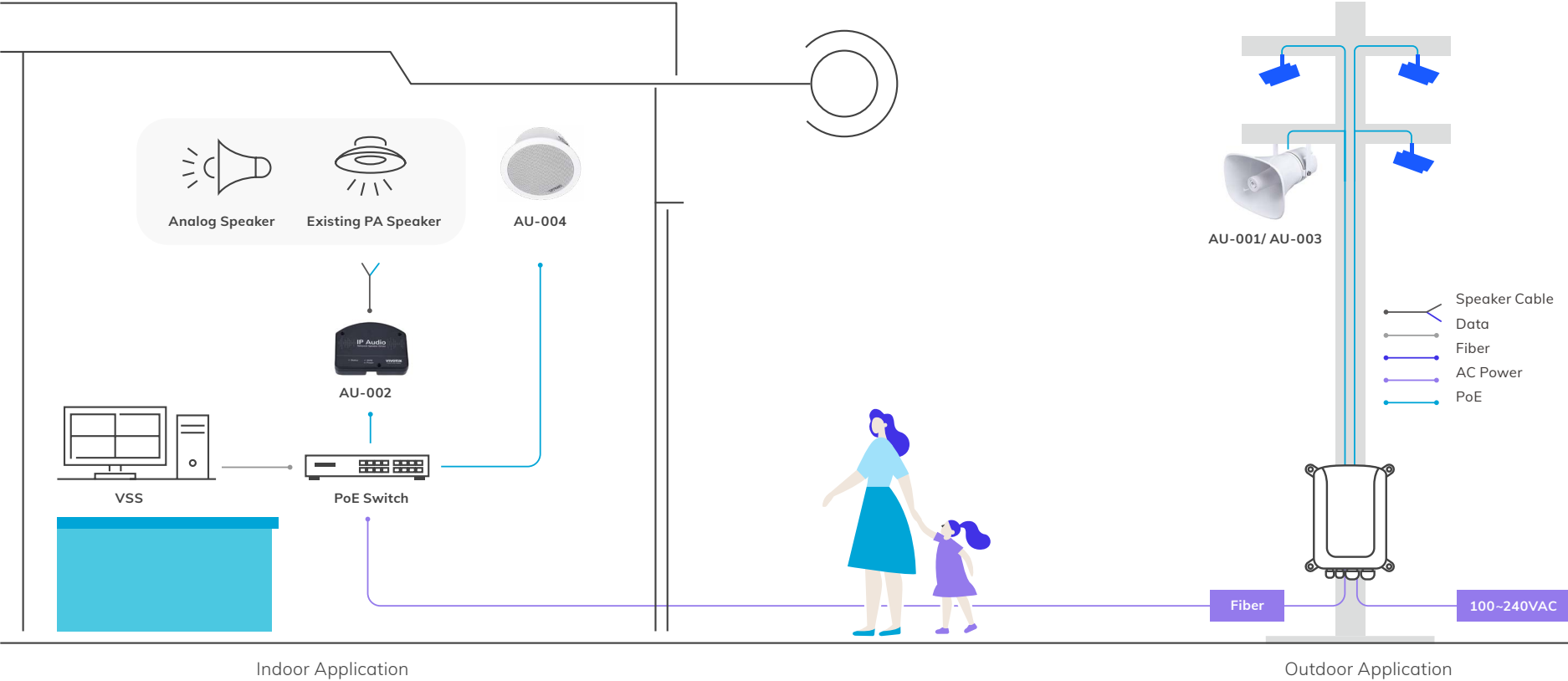
When a person is loitering beyond a preset time limit, an audio warning can be produced.



Deter Crime and Safeguarding

Prevent financial damage from graffiti, breaking and entering, or other criminal acts through proactive audio alarms.

Network Audio Architecture





AU-001



AU-002


NEW AU-003

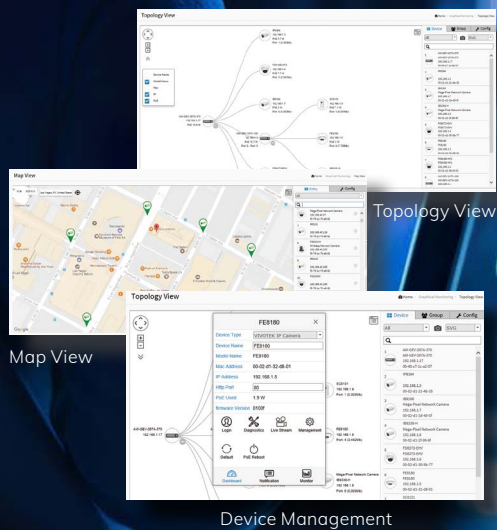
NEW AU-004

Type	Network Horn Speaker		Network Speaker Driver	Network Horn Speaker	
Product Information					
Rated Impedance	8 ohm		Lower to 3 ohm speaker totally(Driver)	8 ohm	
Average Min. Power	20 W			15 W	
Max. Sound Pressure Level	106 dB		-	113 dB	96 dB
Microphone	100Hz-16KHz Single point SPL-44 ± 2db AT 2 KΩ			50Hz-20kHz at 1Pa 50cm distance SPL 115dB at 1kHz	
Network					
Supported Protocols	SIP, IPv4/v6, RIPv2 / OSPF, HTTPS, QoS DSCP, FTP, TFTP, SNMP v2c / v3, SNMP, IGMP, DHCP, SSHv2, PIM- DVMRP, RMON			SIP, ONVIF, HTTP, IPv4, DHCP, RTSP, RTP, RTCP, TCP, UDP, ARP, FTP, TFTP, NFS, NTP	
Audio Codec	G.711 a/uLaw, G.726, G.722, G.729, iLBC, L16			OPUS 48 kHz, MP3 44.1 kHz, G.722 ADPCM 16 kHz, G.711 PCMU 8 kHz, G.711 PCMA, 8 kHz	
General					
Casing	Robust aluminum IP-66 water/dust proof		Plastic	ABS IP66 water-proof	Metal
Power	PoE+ (Power over Ethernet) IEEE 802.3at			PoE, DC 12V	
Operating Temperature	-35°C ~ 60°C (-31°F ~ 140°F)			-30°C ~ 60°C (-22°F ~ 140°F)	
Dimensions	280 x 200 x 280 mm		110 x 85 x 25 mm	225 x 165 x 240 mm	Ø 200 x 90 mm
Weight	1.95 kg		115 g	1.3 kg	1 kg
Certifications	CE, FCC, LVD EN62368-1			CE, FCC, VCCI, BSMI	

* All specifications are subject to change without notice.

PoE Network Products

A full range of products designed for video surveillance systems, including power-surge prevention from lightning strikes, network management, multiple topology views of cameras, and more.



Map View

Topology View

Device Management

Intuitively Managing IP Surveillance



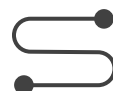
Network & PoE Management

- L2 Network Function
- PoE on/off Control for Each Port
- Cable Diagnostic



Industrial & Outdoor Ready

- Wide Temperature Support
- IP67 and IK10 Certified
- Built-in Surge Protection



Long Range PoE Extension

- 200~300m PoE Delivery
- Support Multiple Cameras with a Single Power Source
- Outdoor-ready Housing

Commercial Series



Model	AW-GTS-287A	AW-GEV-108A-130	AW-GEV-288A-370	AW-GEL-065A-060	AW-GEL-105A-110
Type	10G L2+ Managed Switch		VIVOCAM L2 Managed PoE Switch		Lite Managed PoE Switch
Description	20xGbE SFP 4xCombo GbE 4x10G SFP	2xGbE 90W bt PoE 6xGbE 30W at PoE 2xGbE Combo 1xRJ45 Console Power Budget 130W Extended PoE Mode 250m	4xGbE 90W bt PoE 20xGbE 30W at PoE 4xGbE Combo 1xRJ45 Console Power Budget 370W Extended PoE Mode 250m	4xGbE PoE 2xGbE UTP Per Port Max. 30W Power Budget 60W Extended PoE Mode 250m	2xGbE 90W PoE 6xGbE 30W at 1xGbE UTP 1xGbE SFP Power Budget 110W Extended PoE Mode 250m



Model	AW-GEL-205A-260	AW-GEL-285A-380	AW-FET-060D-065	AW-FGT-100D-120	AW-FGT-180F-250
Type	Lite Managed PoE Switch		Unmanaged FE PoE Switch		
Description	4xGbE 90W PoE 12xGbE 30W at 2xGbE UTP 2xGbE SFP Power Budget 260W Extended PoE Mode 250m	4xGbE 90W PoE 20xGbE 30W at 2xGbE UTP 2xGbE SFP Power Budget 380W Extended PoE Mode 250m	4xFE PoE 2xFE UTP Switch Per Port Max. 30W Power Budget 65W Extended PoE Mode 250m	8xFE PoE 2xGbE Combo Switch Per Port Max. 30W Power Budget 115W Extended PoE Mode 250m	16xFE PoE 2xGbE Combo Per Port Max. 30W Power Budget 250W Extended PoE Mode 250m



Model	AW-FGT-260F-380	AP-GIC-011A-030	AP-GIC-011B-090
Type	Unmanaged FE PoE Switch	PoE Injector	
Description	24xFE PoE 2xGbE Combo Per Port Max. 30W Power Budget 380W Extended PoE Mode 250m	Indoor 1xGbE IEEE 802.3at 30W	Indoor 1xGbE IEEE 802.3bt 90W

* All specifications are subject to change without notice.

Industrial Series



Model **AW-IHT-1271**



Model **AW-IHB-1040**



Model **AW-IHB-0100**



Model **AW-IHS-0202**

Type	Industrial VIVOCAM L2+ Managed PoE Switch	Industrial Lite Managed PoE Switch	Industrial PoE Injector	Industrial Media Converter
Description	Industrial 8xGbE PoE 4xGbE SFP/ Per Port Max. 30W Power Budget 240W	Industrial 2xGbE 802.3bt 90W 6xGbE PoE 2xGbE SFP Power budget 300W	Industrial 1xGbE 802.3bt 90W PoE Injector	Industrial 1xFE 1xFE SFP Media Converter

Long Range Solution



Model **AP-GXC-0100**



Model **AP-GXC-0200**



Model **AP-GXC-0150**



Model **AP-GXC-0250**

Type	PoE Extender			
Description	Indoor 1-Port GbE PoE Extender Input: 15W/30W/60W/90W/95W	Indoor 2-Port GbE PoE Extender Input: 15W/30W/60W/90W/95W	Outdoor 1-Port GbE PoE Extender Input: 15W/30W/60W/90W/95W IP67 IK10	Outdoor 2-Port GbE PoE Extender Input: 15W/30W/60W/90W/95W IP67 IK10

Outdoor Series



Model **AW-GET-083A-120**



Model **AP-PSP-050**

Type	Outdoor Unmanaged PoE Switch	Outdoor PoE Surge Protector
Description	4xGbE PoE 2xGbE UTP 2xGbE SFP	Outdoor PoE Surge Protector 16KV IP67 IK10

* All specifications are subject to change without notice.

PoE Accessories



AT-CAB-001/AT-CAS-001



AT-CAB-002



AT-SUN-001



AT-SUN-002



AT-SWH-000

Type	Cabinet		Cabinet Accessories		
Description	Cabinet/Cabinet for Speed dome (SD936X)	Side-mount Bracket for HLG Series Power Supply	Sunshield for AT-CAx Series Cabinet	Sunshield for AT-CAx AT-CAB-002 Cabinet	Power Safety Kit



AT-SWH-002



AT-PSP-001



AT-WPC-001/ AT-WPC-002



AM-314/ AM-414



DRL-48V120W1EN

Type	Cabinet Accessories				Industrial DIN-Rail Power Supply
Description	Door Open/Close Detection Switch	PoE Surge Protector	M16 Cable Gland for 4-7mm AWG/ for Corrugated Tubing : 5/16"	Pole Mount/ Corner Mount Adapter	Indoor Industrial DIN Rail 43.2-52.8VDC/120W Out -30°C to +70°C (-40°C Cold Start)



DRL-48V240W1EN



HLG-60H-24



HLG-80H-24/HLG-80H-48



HLG-80H-54



HLG-120H-24/HLG-120H-48

Type	Industrial Wall Mount Power Supply				
Description	Indoor Industrial DIN Rail 43.2-52.8VDC/240W Out -30°C to +70°C (-40°C Cold Start)	Outdoor Industrial 24VDC/60W -40°C ~ 70°C IP67	Outdoor Industrial 24VDC/80W or 48VDC/80W -40°C ~ 70°C IP67	Outdoor Industrial 54VDC/80W -40°C ~ 70°C IP67	Outdoor Industrial 24VDC/120W or 48VDC/120W -40°C ~ 70°C IP67

* All specifications are subject to change without notice.



Model	HLG-120H-54	HLG-240H-24/HLG-240H-54	AA-352	SFP-1000-MM85-X5	SFP-1000-MM13-02
Type	Industrial Wall Mount Power Supply		Outdoor Power Box	SFP Transceiver	
Description	Outdoor Industrial 54VDC/120W -40°C ~ 70°C IP67	Outdoor Industrial 24VDC/240W or 54VDC/240W -40°C ~ 70°C IP67	IP67 IK10 24VAC/6A -40°C ~ 60°C	1.25G Multi-Mode SFP 850nm 0.5KM 0°C ~ 70°C	1.25G Multi-Mode SFP LC 1310nm 2KM 0°C ~ 70°C



Model	SFP-1000-MM85-X51	SFP-1000-MM13-02I	SFP-1000-SM13-10I/40I	SFP-2000-MM85-X3	
Type	SFP Transceiver				
Description	1.25G Single-Mode SFP LC 1310nm 10KM or 40KM 0°C ~ 70°C	Industrial 1.25G Multi-Mode SFP LC 850nm 0.5KM -40°C ~ 85°C	Industrial 1.25G Multi-Mode SFP LC 1310nm 2KM -40°C ~ 85°C	Industrial 1.25G Single-Mode SFP LC 1310nm 10KM/40KM -40°C ~ 85°C	10G Multi-Mode SFP+ LC 850nm 0.3KM 0°C ~ 70°C



Model	SFP-2000-SM13-10	SFP-1000-CPTX-X1/X1I
Type	SFP Transceiver	
Description	10G Single-Mode SFP+ LC 1310nm 10KM 0°C ~ 70°C	1000BaseT SFP to RJ45 100M 0°C ~ 70°C / -40°C ~ 85°C

* All specifications are subject to change without notice.

Solution Integration Alliance

The SIA (Solution Integration Alliance) Program is a strategic alliance that aims to facilitate the integration of VIVOTEK products into leading software or hardware platforms. With the SIA Program, partners have the flexibility to enhance key functionalities when creating an IP surveillance solution. The SIA Program provides programmable Software Development Kits (SDK) to allow partners to develop customized features on an open platform, allowing the highest possible level of integration. VIVOTEK also provides technical support throughout the development process.

Find out more about enrolling in the VIVOTEK SIA Program, please email sia@vivotek.com for more information.management from anywhere at any time.





VIVOTEK

A Delta Group Company

Distributed by:



www.vivotek.com

VIVOTEK Inc.

6F, No.192, Liancheng Rd., Zhonghe Dist.,
New Taipei City 235, Taiwan
| T +886-2-82455282 | E sales@vivotek.com

VIVOTEK Japan

〒 105-0012 東京都港区芝大門 2-1-14,
デルタ芝大門ビル
| T +81-3-5733-1280 | E salesjp@vivotek.com

VIVOTEK USA

2050 Ringwood Avenue, San Jose, CA 95131
| T 408-773-8686 | E salesusa@vivotek.com

VIVOTEK India

602, Best Sky Tower, Plot No. F-5, Netaji Subhash Place,
Pitampura, New Delhi-110034
| T +91-11-45137465 | E salesindia@vivotek.com

VIVOTEK EMEA

Zandsteen 15, 2132 MZ Hoofddorp,
The Netherlands
| T +31(0)20-800-3817 | E saleseurope@vivotek.com

VIVOTEK LATAM

Av. Pdte. Masaryk 101, Piso 10 Oficina 1002, Polanco V Sección,
11560, Miguel Hidalgo, CDMX.
| T +52 55 5531 4184 | E saleslatam@vivotek.com

